

V A U G H A N

Fine Tools



1940

CATALOG

and

DEALERS' PRICE LIST

MARCH 11, 1940

SPECIAL ADDITIONAL DISCOUNT ON
THIS PRICE LIST - 25%.
EXCEPT SUB-ZERO AND TROPICAL AXES
WHICH ARE NET.

BRANCH SALES OFFICES AND WAREHOUSES
Boston, Mass. New York, N. Y.

PACIFIC COAST BRANCH SALES OFFICES
827 Sheldon Bldg. 925 Washington Bldg. 505 Maritime Bldg.
San Francisco, Calif. Los Angeles, Calif. Seattle, Wash.



Established 1869

**VAUGHAN & BUSHNELL
MANUFACTURING CO.**

Incorporated 1882



2114 CARROLL AVENUE, CHICAGO, ILLINOIS

TERMS, CONDITIONS and PRICES

Subject to change without notice.

This price sheet cancels all previous quotations.

All orders accepted subject to strikes, fires, unavoidable delays, and our ability to supply.

We guarantee our axe prices against our own market decline up to December 31, 1940. This guarantee applies only to stock shipped on and after May 1, 1940 on hand at time of decline. Prices are not guaranteed against any advance after May 1, 1940.

SETTLEMENTS: 60 days net. Invoices dated between the 1st and 15th of the month inclusive, to be discounted at 2% on or before the 25th of the same month; invoices dated between the 16th and 31st of the same month inclusive, are to be discounted at 2% on or before the 10th of the following month.

All claims for allowances must be made promptly on receipt of goods. Remittances must be made in par funds in Chicago or New York.

Sales in the State of Illinois of items purchased for consumption and not for resale are subject to an additional charge of 3% on account of the Retailers' Occupational Tax Act.

FREIGHT TERMS: Prices on ALL ITEMS are F.O.B. Chicago. Freight equalized with the nearest recognized competing factory. On HAMMERS and HATCHETS we will allow an additional freight allowance up to 50 cents per 100 pounds on shipments of 100 pounds or more.

On freight shipments direct to jobbers' customers there is no freight equalization or freight allowance and an additional charge of 5% will be made—no charge less than 50 cents. On all other shipments direct to jobbers' customers there is an additional charge of 5%.

Recognized competing factories:

AXES

Charleston, W. Va.
Warren, Pa.

Lewiston, Pa.
St. Louis, Mo.
Oakland, Maine

Collinsville, Conn.
Evansville, Ind.

HAMMERS

Charleston, W. Va.
Cleveland, Ohio
Evansville, Ind.

Meadville, Pa.
Newark, N. J.
Newcomerstown, O.

Philadelphia, Pa.
Southington, Conn.
Norwich, N. Y.

HATCHETS

Charleston, W. Va.

Collinsville, Conn.
Evansville, Ind.

Philadelphia, Pa.

We will gladly replace, if returned to us, any first quality tool stamped with our name, that may prove defective either in material or workmanship. No edge tool will be replaced that has been improperly reground.

GENERAL INFORMATION

All axes except 1 $\frac{1}{4}$ and 1 $\frac{3}{4}$ lb. made under process patents Nos. 1,948,548 and 1,948,549.

Black and white two-tone handles—Trade Mark Reg. U. S. Pat. Off.

Brown and white two-tone handles—Trade Mark Reg. U. S. Pat. Off.

V & B Handle Label—Trade Mark Reg. U. S. Pat. Off.

An extra price is charged for broken packages.

PACKING AND SHIPPING INFORMATION

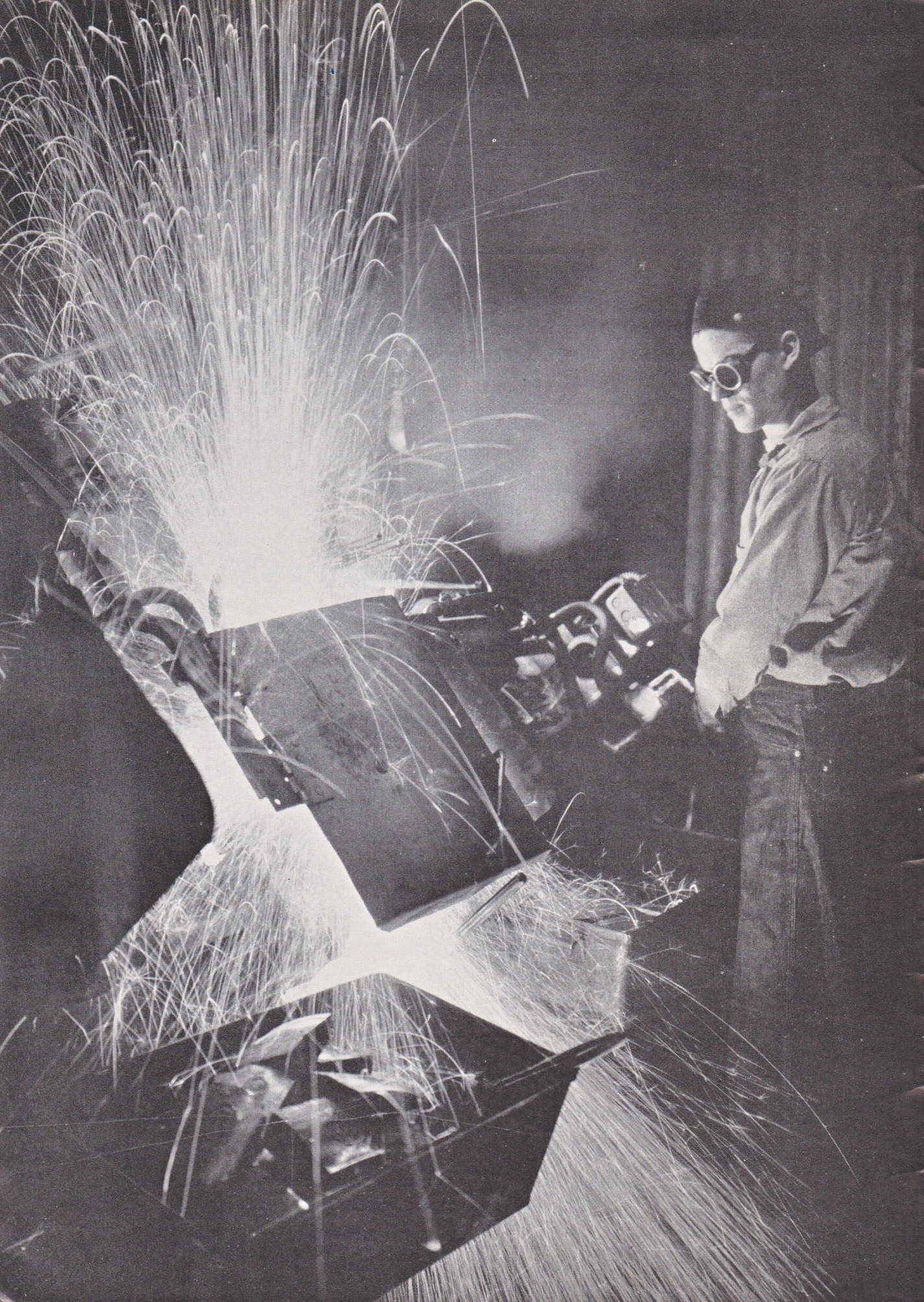
Unhandled axes should be figured at 50 pounds per dozen and handled axes at 70 pounds per dozen. Nail Hammers, 20 pounds per dozen. All other hammers, 25 pounds per dozen. Hatchets, 30 pounds per dozen.

To estimate weight of Octagon tools use the following table of weights of octagon steel per foot:

| | | | |
|----------------------|------|-----------------------|------|
| $\frac{1}{4}$ | .176 | $\frac{5}{8}$ | 1.10 |
| $\frac{5}{16}$ | .275 | $\frac{3}{4}$ | 1.58 |
| $\frac{3}{8}$ | .396 | $\frac{7}{8}$ | 2.15 |
| $\frac{7}{16}$ | .539 | 1 | 2.81 |
| $\frac{1}{2}$ | .704 | 1 $\frac{1}{8}$ | 3.56 |
| | | 1 $\frac{1}{4}$ | 4.40 |

Weights shown on Axes, Hammers and Hatchets do not include handles.

All tools are packed one-half dozen in a box unless otherwise indicated on price list.



VAUGHAN AXES

Vaughan Axes are manufactured under the **PATENTED ELECTRIC FUSION PROCESS** (Pats. 1,948,548 and 1,948,549). This consists of forging the head and blade of the axe separately, the two being joined together by the **ELECTRIC FUSION PROCESS**, a picture of which may be seen on the opposite page. This produces a perfect blend of the two parts, each of which is made from the particular type of steel best suited for both parts of the axe.

The head of the axe is forged from a tough steel that will withstand the most severe usage. The entire blade is forged separately from a high grade tool steel chosen for its cutting qualities and its ability to stand up under the most gruelling service. The result, after being joined together by the **ELECTRIC FUSION PROCESS**, is a real electric bi-metallic axe that is recognized as the strongest yet developed.

The Vaughan process of axe manufacture produces the thinnest blade for faster cutting together with an eye that is true and will stand up under the hardest service. The all tool steel blade, extending almost to the point where the eye begins, permits the axe to be ground back further, greatly increasing the life of the tool.

For faster cutting, longer life and absolute dependability, try a Vaughan Axe. Thousands of satisfied users will vouch for them.



S. B. EYE FORGED
TOUGH STEEL



S. B. EYE FORMED



BLADE TRIMMED
HIGH GRADE
TOOL STEEL



DOUBLE BIT EYE
FORGED IN TWO
PARTS FROM
TOUGH STEEL



DOUBLE BIT EYE
AND BLADE
ELECTRICALLY
FUSED TOGETHER

Vaughan Sub-Zero Axe

(Trade Mark Reg. U. S. Pat. Off.)

The Only Axe With All These Features

1. An ENTIRE BLADE of HIGH GRADE tool steel, selected for its CUTTING QUALITIES.
2. Tough Steel Head.
3. Patented ELECTRIC FUSION PROCESS followed by a SPECIAL DOUBLE HEAT TREATMENT. This process, exclusive with VAUGHAN, makes a true SUB-ZERO AXE, because—

The SUB-ZERO AXE has an ALL TOOL STEEL BLADE and yet there is no high carbon steel in the eye to crystalize when frozen.

4. Extra Thin Blade for faster cutting.
5. VAUGHAN'S exclusive new and distinctive striped finish on the head. Trade Mark Reg. U. S. Pat. Off.

No finer Axe at any price.

Custom Built for cold climates.

Designed for chopping at temperatures as low as 50° below zero.

It takes less strokes with a VAUGHAN SUB-ZERO AXE. The thin blade is the reason.

Furnished in all standard patterns listed on page 8, except beveled.

Single Bit

No. 1 Handles.

| Wgt. lbs. | Blue & Silver Striped Finish. | |
|------------|-------------------------------|------------------|
| | Doz. Net Unhandled* | Doz. Net Handled |
| 3..... | \$14.50 | \$19.00 |
| 3 1/4..... | 14.50 | 19.00 |
| 3 1/2..... | 14.50 | 19.00 |
| 3 3/4..... | 15.50 | 20.00 |
| 4..... | 15.50 | 20.00 |
| 4 1/2..... | 16.50 | 21.00 |
| 5..... | 17.50 | 22.00 |

Double Bit

No. 1 Handles.

| Wgt. lbs. | Blue & Silver Striped Finish. | |
|------------|-------------------------------|------------------|
| | Doz. Net Unhandled* | Doz. Net Handled |
| 3..... | \$18.50 | \$23.00 |
| 3 1/4..... | 18.50 | 23.00 |
| 3 1/2..... | 18.50 | 23.00 |
| 3 3/4..... | 19.50 | 24.00 |
| 4..... | 19.50 | 24.00 |
| 4 1/2..... | 20.50 | 25.00 |
| 5..... | 21.50 | 26.00 |

Assortments

See Page 8

| Group | Unhandled* | Handled |
|--------|------------|---------|
| 1..... | \$14.50 | \$19.00 |
| 2..... | 15.50 | 20.00 |
| 3..... | 16.50 | 21.00 |
| 4..... | 17.50 | 22.00 |

Assortments

See Page 8

| Group | Unhandled* | Handled |
|--------|------------|---------|
| 1..... | \$18.50 | \$23.00 |
| 2..... | 19.50 | 24.00 |
| 3..... | 20.50 | 25.00 |
| 4..... | 21.50 | 26.00 |

*Sub-Zero Axes are sold unhandled under the condition that no lower grade handle than No. 1 is to be used.

Vaughan Tropical Hardwood Axe

(Trade Mark Reg., U. S. Pat. Off.)

With Chip Clearance Blade

The VAUGHAN TROPICAL HARDWOOD AXE is designed for cutting the toughest hardwood faster than ever.

It takes 5,000 lbs. pressure to bend the blade of this axe, yet its EXTRA THIN BLADE does a quicker cutting job, requiring less work.

The special streamline, flow-shaped blade gives CHIP CLEARANCE and PREVENTS BINDING.

Ask for the Red Axe with the stripes. Trade Mark Reg., U. S. Pat. Off.

It's tougher.

It cuts faster.

It lasts longer.

Yet it costs no more.

Single Bit

No. 1 Handles

Red & Silver Striped Finish

Michigan, Dayton, Kentucky,
or Southern Kentucky
Patterns

| Wgt. Lbs. | Doz. Net Unhandled | Doz. Net Handled |
|--------------|-----------------------|---------------------|
| 3 1/2 | \$14.50 | \$19.00 |
| 3 3/4 | 15.50 | 20.00 |
| 4 | 15.50 | 20.00 |
| 4 1/2 | 16.50 | 21.00 |

Double Bit

No. 1 Handles

Red & Silver Striped Finish

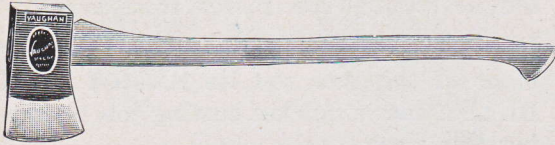
Michigan, Western
Patterns

| Wgt. Lbs. | Doz. Net Unhandled | Doz. Net Handled |
|--------------|-----------------------|---------------------|
| 3 | \$18.50 | \$23.00 |
| 3 1/4 | 18.50 | 23.00 |
| 3 1/2 | 18.50 | 23.00 |
| 3 3/4 | 19.50 | 24.00 |
| 4 | 19.50 | 24.00 |
| 4 1/2 | 20.50 | 25.00 |

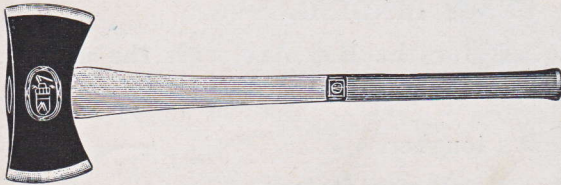
Vaughan Axes



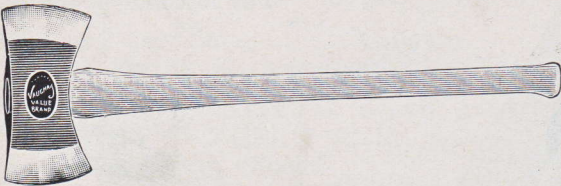
Supersteel Single Bit Michigan



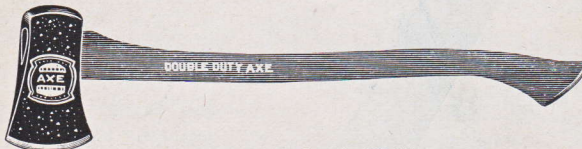
Value Brand Single Bit Dayton



Supersteel Double Bit Michigan



Value Brand Double Bit Western



Double Duty Single Bit Michigan

Axe Assortments

Base Group

(Base Weights)
All 3 or 3 1/4 or 3 1/2 lbs.
or assorted.

3 to 3 1/4 3 to 4
3 to 3 1/2 3 1/4 to 3 1/2
3 to 3 3/4 3 1/4 to 3 3/4
Total weight not over 42 lbs.
No Axe over 4 lbs.

Group 2

All 3 3/4 lbs. or 4 lbs., or assorted

3 to 4 1/2 3 1/2 to 4
3 1/4 to 4 3 1/2 to 4 1/2
3 1/4 to 4 1/2 3 3/4 to 4
3 1/2 to 3 3/4
Total weight not over 48 lbs.
No Axe over 4 1/2 lbs.

Group 3

All 4 1/2 lbs., or assorted

3 1/2 to 5 4 to 4 1/2
3 3/4 to 4 1/2 4 to 5
3 3/4 to 5
Total weight not over 54 lbs.
No Axe over 5 lbs.

Group 4

All 5 lbs., or assorted

4 1/2 to 5
Total weight not over 60 lbs.
No Axe over 5 lbs.

Supersteel

Single Bit

No. 1 Two Tone Handles
Patent Leather Finish.

Michigan, Dayton, Yankee or Maine, Kentucky or Southern Kentucky, Baltimore or Baltimore-Kentucky, Jersey or Baltimore-Jersey, and Connecticut Patterns.

| Wgt. lbs. | Doz. Net Unhandled | Doz. Net Handled | Wgt. lbs. | Doz. Net Unhandled | Doz. Net Handled |
|-----------|--------------------|------------------|-----------|--------------------|------------------|
| 3 | \$14.50 | \$19.00 | 3 | \$12.50 | \$16.00 |
| 3 1/4 | 14.50 | 19.00 | 3 1/4 | 12.50 | 16.00 |
| 3 1/2 | 14.50 | 19.00 | 3 1/2 | 12.50 | 16.00 |
| 3 3/4 | 15.50 | 20.00 | 3 3/4 | 13.50 | 17.00 |
| 4 | 15.50 | 20.00 | 4 | 13.50 | 17.00 |
| 4 1/2 | 16.50 | 21.00 | 4 1/2 | 14.50 | 18.00 |
| 5 | 17.50 | 22.00 | 5 | 15.50 | 19.00 |

Assortments

| Group | Unhandled | Handled | Group | Unhandled | Handled |
|-------|-----------|---------|-------|-----------|---------|
| 1 | \$14.50 | \$19.00 | 1 | \$12.50 | \$16.00 |
| 2 | 15.50 | 20.00 | 2 | 13.50 | 17.00 |
| 3 | 16.50 | 21.00 | 3 | 14.50 | 18.00 |
| 4 | 17.50 | 22.00 | 4 | 15.50 | 19.00 |

Double Bit

Michigan, Western, California Reversible or Half Peeling, Young's, Cedar, Swamping and Falling* Patterns.

| Wgt. lbs. | Unhandled | Handled | Wgt. lbs. | Unhandled | Handled |
|-----------|-----------|---------|-----------|-----------|---------|
| 3 | \$18.50 | \$23.00 | 3 | \$16.50 | \$20.00 |
| 3 1/4 | 18.50 | 23.00 | 3 1/4 | 16.50 | 20.00 |
| 3 1/2 | 18.50 | 23.00 | 3 1/2 | 16.50 | 20.00 |
| 3 3/4 | 19.50 | 24.00 | 3 3/4 | 17.50 | 21.00 |
| 4 | 19.50 | 24.00 | 4 | 17.50 | 21.00 |
| 4 1/2 | 20.50 | 25.00 | 4 1/2 | 18.50 | 22.00 |
| 5 | 21.50 | 26.00 | 5 | 19.50 | 23.00 |

Assortments

| Group | Unhandled | Handled | Group | Unhandled | Handled |
|-------|-----------|---------|-------|-----------|---------|
| 1 | \$18.50 | \$23.00 | 1 | \$16.50 | \$20.00 |
| 2 | 19.50 | 24.00 | 2 | 17.50 | 21.00 |
| 3 | 20.50 | 25.00 | 3 | 18.50 | 22.00 |
| 4 | 21.50 | 26.00 | 4 | 19.50 | 23.00 |

With No. 2 Handle
Add \$0.50 Dozen.

Double Duty Brand

Single Bit

Brown Stained Handle, Black Finish.

Michigan, Dayton and
Baltimore-Jersey Patterns Only.

| Wgt. lbs. | Doz. Net Handled |
|-----------|------------------|
| 3 1/2 | \$12.00 |

Packed 1 Doz. in a carton.

*Falling Pattern Axes Furnished at Extra Price of \$1.00 Dozen.

Double Bit

Michigan, Western, California
Reversible Patterns Only.

| Wgt. lbs. | Doz. Net Handled |
|-----------|------------------|
| 3 1/2 | \$16.00 |

Axe Extras

Doz. Net
S.B. D.B.

De Luxe
Black Finish \$1.00 \$1.00
Deep Etch . 1.00 1.00
Full Polish . 1.00 1.00

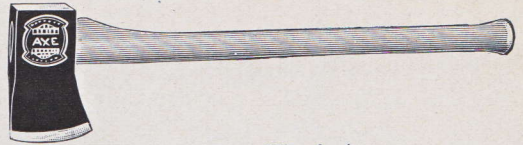
Handle Extras

Second Growth AA \$6.00
Extra Quality AW 5.50
Excelsior 5.00
No. 1 BW, AR . . . 4.50
No. 2 BR . . . 4.00
No. 3 C 3.50
Octagon Handles . . 0.30
Scroll End Handles .15

Vaughan Axes

Miners' Axes

| Value Brand | | | Double Duty Brand | | |
|-------------------------|----------|--|---------------------------|----------|--|
| Polished Blade—Red Poll | | | Black Finish | | |
| 26-in. White Lacquer | Handles | | 26 in. Brown Stained | Handles. | |
| Wgt. lbs. | Doz. Net | | Wgt. Lbs. | Doz. Net | |
| | Handled | | | Handled | |
| 3-3 $\frac{1}{2}$ lb. | \$15.50 | | 3 $\frac{1}{2}$ lb | \$12.00 | |
| 4 lb. | 16.50 | | Packed 1 Doz. in a Carton | | |
| 4 $\frac{1}{2}$ lb. | 17.50 | | | | |



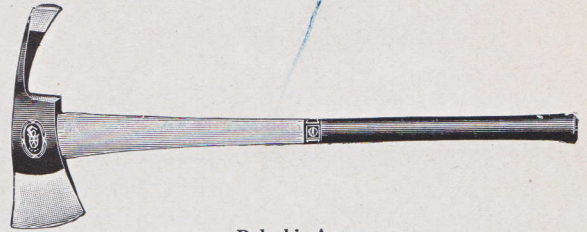
Double Duty Miner's Axe

Special Axes

Mattock Ax

(Pulaski Tool)

| Wgt. lbs. | Doz. Net |
|---------------------------|----------|
| 3 $\frac{3}{4}$ Unhandled | \$22.00 |

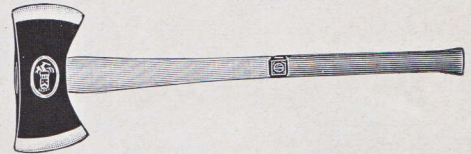


Pulaski Axe

Cruiser or Cedar

D. B.

| | |
|---------------------------|---------|
| 2 $\frac{1}{2}$ No. 1-28" | |
| or 30" Hdl. | \$23.50 |
| Sheaths | 6.00 |



Cruiser Axe

Fireman's

| | |
|---------------|---------|
| 4 lb. Handled | \$31.80 |
| 5 lb. Handled | 33.40 |
| 6 lb. Handled | 35.00 |

Light Axes

Supersteel

Patent Leather Finish.

Value Brand

Polished Blade
Red Poll

20th Century

Black Finish
Polished Bit



Supersteel Boys' Axe

Boys'

2 $\frac{1}{4}$ lbs., 28" Handle

| No. | Doz. Net | No. | Doz. Net | No. | Doz. Net |
|-----|----------|-----|----------|-----|----------|
| 2 | \$14.00 | 802 | \$12.00 | TC2 | \$10.00 |



Supersteel House Axe

House

2 $\frac{1}{4}$ lbs., 19" Handle

| | | | | | |
|---|---------|-----|---------|-----|---------|
| 2 | \$13.50 | 802 | \$12.00 | TC2 | \$10.00 |
|---|---------|-----|---------|-----|---------|

Hunters'

1 $\frac{3}{4}$ lbs., 17" Handle

| | | | | | |
|---|---------|-----|---------|-----|---------|
| 2 | \$12.00 | 802 | \$11.00 | TC2 | \$10.00 |
|---|---------|-----|---------|-----|---------|



Supersteel Hunters' Axe

Camp

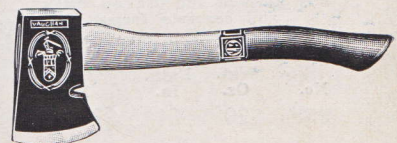
For Scouts and Campers.

1 $\frac{1}{4}$ lbs., 14" Handle

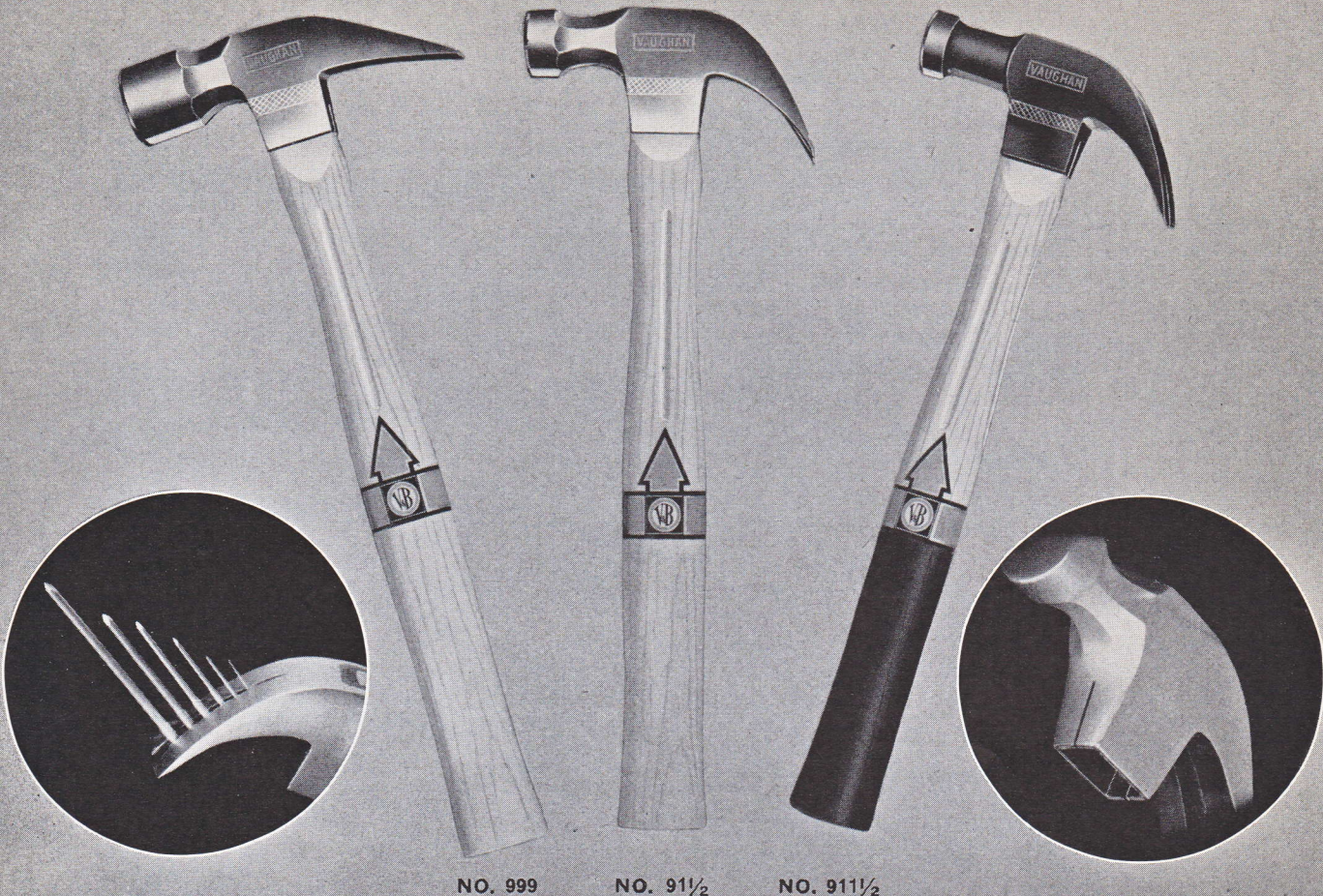
| | | | | | |
|-------------|---------|-----|--------|-----|--------|
| 0 With Slot | \$10.75 | 800 | \$9.00 | TC0 | \$8.00 |
|-------------|---------|-----|--------|-----|--------|

0 With
Sheaths 13.25

Leather
Sheaths only. 3.50



Supersteel Camp Axe



NO. 999

NO. 91 1/2

NO. 911 1/2

Vaughan Spring Eye Hammers

"The Hammers With the Shock Absorbing Action"

Spring Eye Hammers are less tiring to use. The Vaughan Patented Spring Eye, (Pat. 2,090,164) combined with the special fluted Spring Handle (Pat. 2,184,985 & D-108,709), absorbs the shock, cushions the blow.

The Spring Eye helps keep the handle tight by automatically taking up handle shrinkage. It also reduces the handle breakage that often occurs when the bottom edges of the adze eye cut into the handle.

Vaughan Spring Eye Hammers are perfectly balanced and perfectly made, with a special claw that will grip any size nail from brad to spike.

*999 Hammer

Spring Adze Eye and Fluted
Spring Neck Handle
Octagon Neck. Round Poll.
Polished.

1 1/4 in. diameter head
Designed for Steam Fitters,
Plumbers, Electricians, Mill-
wrights, Cement Workers and
Carpenters heavy work. Espe-
cially adapted for use on drills
and concrete forms.

Straight Claw

| No. | Wgt. Oz. | Lgth. In. | Doz. Net |
|-----|-------------|--------------|-------------|
| 999 | 20 | 14 | \$16.00 |

*91 1/2 Hammer

Spring Adze Eye and Fluted
Spring Neck Handle
Octagon Neck. Round Poll.
Alloy steel.
Polished.

Bell Face Nail

| No. | Wgt. Oz. | Lgth. In. | Doz. Net |
|--------|-------------|--------------|-------------|
| 91 1/2 | 16 | 13 | \$14.00 |

Ripping

| | | | |
|----------|----|----|---------|
| 91 1/2 R | 16 | 13 | \$14.00 |
|----------|----|----|---------|

*911 1/2 Hammer

Spring Adze Eye and Fluted
Spring Neck Handle
Round Neck. Polished Poll.
Patent Leather Finish.
Gold trim.

Bell Face Nail

| No. | Wgt. Oz. | Lgth. In. | Doz. Net |
|---------|-------------|--------------|-------------|
| 911 1/2 | 16 | 13 | \$12.00 |

Ripping

| | | | |
|-----------|----|----|---------|
| 911 1/2 R | 16 | 13 | \$12.00 |
|-----------|----|----|---------|

*Packed 4 in a box.

Vaughan Super-Vanadium Hammers

Chromium Plated

Vaughan Super-Vanadium Hammers are the acme of perfection in Nail and Ripping Hammers. They are the result of seventy years of quality tool manufacture by skilled tool craftsmen. Tens of thousands skilled carpenters will use no other.

Made from special V & B formula vanadium steel with rust-proof chromium plated finish, handled with the finest second growth octagon neck white hickory handle with exclusive wax hole, and individually tested and inspected—they are uniquely superior.

Nail

Chromium Plated
Octagon Neck. Round Poll.
Octagon Neck Handle.
Wax Hole in Handle

| No. | Wgt. oz. | Lgth. in. | Doz. Net |
|-----|-------------|--------------|-------------|
| 41 | 20 | 14 | \$16.00 |
| 41½ | 16 | 13 | 16.00 |
| 42 | 13 | 13 | 16.00 |

Ripping

| No. | Wgt. oz. | Lgth. in. | Doz. Net |
|-----|-------------|--------------|-------------|
| 31 | 20 | 14 | \$16.00 |
| 31½ | 16 | 13 | 16.00 |

Packed 4 in a Box



No. 41½ Super-Vanadium Nail Hammer



No. 31½ Super-Vanadium Rip Hammer

Vaughan Alloy Steel Hammers

Containing Vanadium

Vaughan Alloy Steel Hammers are made from a high grade alloy steel, containing vanadium. The octagon neck heads are full polished and are equipped with first grade white hickory octagon neck handles.

Vaughan Alloy Steel Hammers are first quality in every respect.

Nail

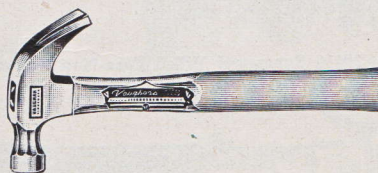
Polished
Octagon Neck. Round Poll
Octagon Neck Handle

| No. | Wgt. oz. | Lgth. in. | Doz. Net |
|------|-------------|--------------|----------|
| 471 | 20 | 14 | \$14.00 |
| 471½ | 16 | 13 | 12.00 |
| 472 | 13 | 13 | 11.60 |

Ripping

| No. | Wgt. oz. | Lgth. in. | Doz. Net |
|-------|-------------|--------------|----------|
| 471R | 20 | 14 | \$14.00 |
| 471½R | 16 | 13 | 12.00 |

Packed 6 in a box.



No. 471½ Alloy Steel Nail Hammer

Vaughan Supersteel Hammers

Quality—Distinctiveness

Extra Refined Steel—Drop Forged—Tempered Faces and Claws

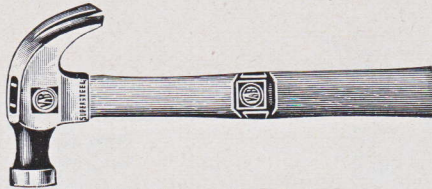
All Supersteel Nail Hammers have Non-Slip Claw. They will firmly grip any size nail from brad to spike. The eyes are forged smaller toward the center than at the ends, which binds the handle firmly. The sides are crowning and will not dent the wood when matching flooring or wainscoting. The V & B Supersteel is our standard quality and big seller for general use. Trade Mark Reg. U. S. Pat. Off.

Supersteel Brand

Polished Heads
Two-tone Hickory Handles

*Bell Face Nail

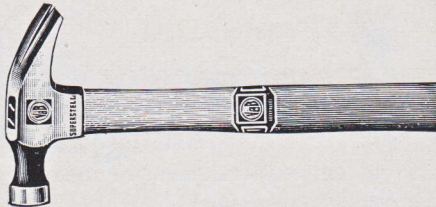
| No. | Wgt. Oz. | Lgth. In. | Doz. Net |
|-----|-------------|--------------|-------------|
| 11 | 20 | 14 | \$12.00 |
| 11½ | 16 | 13 | 10.00 |
| 12 | 13 | 13 | 9.60 |
| 12½ | 10 | 12½ | 9.20 |
| 13 | 7 | 12 | 9.20 |
| 14 | 5 | 11 | 9.20 |



No. 11½ Supersteel Nail Hammer

*Bell Face Ripping

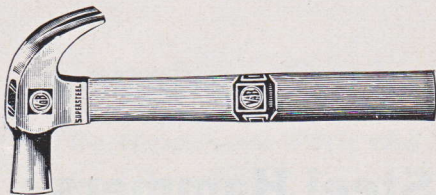
| | | | |
|------|----|----|---------|
| 11R | 20 | 14 | \$12.00 |
| 11½R | 16 | 13 | 10.00 |
| 12R | 13 | 13 | 9.60 |



No. 11½R Supersteel Ripping Hammer

Plain Face Nail

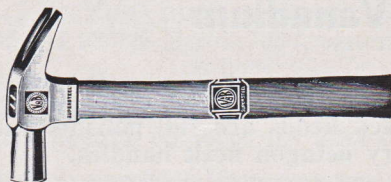
| | | | |
|----|----|----|---------|
| 0 | 28 | 14 | \$14.30 |
| 1 | 20 | 14 | 12.00 |
| 1½ | 16 | 13 | 10.00 |
| 2 | 13 | 13 | 9.60 |



No. 1½ Supersteel Plain Face Nail Hammer

Plain Face Ripping

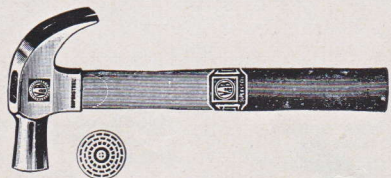
| | | | |
|-----|----|----|---------|
| 1R | 20 | 14 | \$12.00 |
| 1½R | 16 | 13 | 10.00 |



No. 1½R Supersteel Plain Face Ripping Hammer

*Milled Face Nail

| | Bell Poll | | |
|------|------------|----|---------|
| 211½ | 16 | 13 | \$11.00 |
| | Plain Poll | | |
| 200 | 28 | 14 | \$15.30 |
| 201 | 20 | 14 | 13.00 |
| 201½ | 16 | 13 | 11.00 |



No. 201½ Supersteel Milled Face Nail Hammer

Double Octagon Nail

Octagon Neck and Poll.

| | | | |
|-----|----|----|---------|
| 01 | 20 | 14 | \$14.00 |
| 01½ | 16 | 13 | 12.00 |
| 02 | 13 | 13 | 11.60 |

With Octagon Handle.

| | | | |
|------|----|----|---------|
| D01 | 20 | 14 | \$14.00 |
| D01½ | 16 | 13 | 12.00 |
| D02 | 13 | 13 | 11.60 |



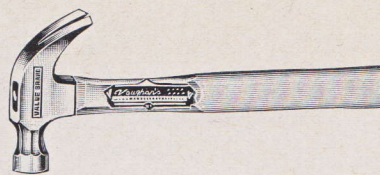
No. D 01½ Double Octagon Nail Hammer

*Extra charge for Polishing
Neck of Bell Face Hammers.
50 cents a dozen net.

Vaughan Hammers

Value Brand—Octagon Neck

| Polished. | | | | |
|---------------------|-------------|--------------|-------------|--|
| Round Poll | | | | |
| Octagon Neck Handle | | | | |
| No. | Wgt. Oz. | Lgth. In. | Doz. Net | |
| 71 $\frac{1}{2}$ | 16 | 13 | \$10.00 | |

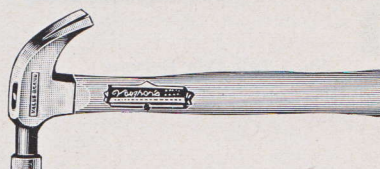


No. 71 $\frac{1}{2}$ Value Brand Nail Hammer

Value Brand—Polished

White Lacquered Handle

| Bell Face Nail | | | | Plain Face Nail | | | |
|-------------------|-------------|------------------|-------------|-------------------|-------------|--------------|-------------|
| No. | Wgt. Oz. | Lgth. In. | Doz. Net | No. | Wgt. Oz. | Lgth. In. | Doz. Net |
| 411 | 20 | 14 | \$10.00 | 401 | 20 | 14 | \$10.00 |
| 411 $\frac{1}{2}$ | 16 | 13 | 8.00 | 401 $\frac{1}{2}$ | 16 | 13 | 8.00 |
| 412 | 13 | 13 | 7.60 | 402 | 13 | 13 | 7.60 |
| 412 $\frac{1}{2}$ | 10 | 12 $\frac{1}{2}$ | 7.60 | | | | |
| 413 | 7 | 12 | 7.20 | | | | |



No. 411 $\frac{1}{2}$ Value Brand Nail Hammer
Polished

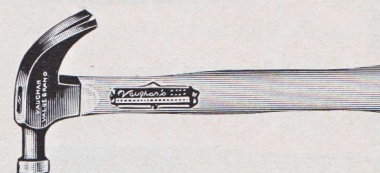
Ripping

| | | | |
|---------------------|----|----|---------|
| 411R | 20 | 14 | \$10.00 |
| 411 $\frac{1}{2}$ R | 16 | 13 | 8.00 |

Value Brand—Black

White Lacquered Handle

| Bell Face Nail | | | | Plain Face Nail | | | |
|-------------------|-------------|--------------|-------------|-------------------|-------------|--------------|-------------|
| No. | Wgt. Oz. | Lgth. In. | Doz. Net | No. | Wgt. Oz. | Lgth. In. | Doz. Net |
| 111 | 20 | 14 | \$8.00 | 101 | 20 | 14 | \$8.00 |
| 111 $\frac{1}{2}$ | 16 | 13 | 6.00 | 101 $\frac{1}{2}$ | 16 | 13 | 6.00 |
| 112 | 13 | 13 | 5.60 | 102 | 13 | 13 | 5.60 |
| 113 | 7 | 12 | 5.60 | | | | |



No. 111 $\frac{1}{2}$ Value Brand Nail Hammer
Black

Ripping

| | | | |
|---------------------|----|----|--------|
| 111 R | 20 | 14 | \$8.00 |
| 111 $\frac{1}{2}$ R | 16 | 13 | 6.00 |

Twentieth Century—Octagon Neck

Polished

Black Octagon Neck—Round Poll
Octagon Neck Handle

Alloy Steel

| | | | | | | | |
|-------------------|----|----|---------|-------------------|----|----|--------|
| 361 $\frac{1}{2}$ | 16 | 13 | \$10.00 | 611 $\frac{1}{2}$ | 16 | 13 | \$8.00 |
|-------------------|----|----|---------|-------------------|----|----|--------|

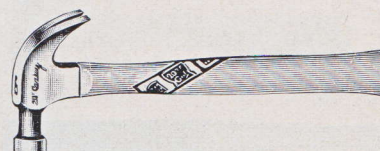


No. 361 $\frac{1}{2}$ Twentieth Century Nail Hammer

Twentieth Century—Polished

White Lacquered Handle

| Bell Face Nail | | | | Bell Face Ripping | | | |
|-------------------|-------------|--------------|-------------|---------------------|-------------|--------------|-------------|
| No. | Wgt. Oz. | Lgth. In. | Doz. Net | No. | Wgt. Oz. | Lgth. In. | Doz. Net |
| 311 $\frac{1}{2}$ | 16 | 13 | \$6.00 | 311 $\frac{1}{2}$ R | 16 | 13 | \$6.00 |



No. 311 $\frac{1}{2}$ Twentieth Century Nail Hammer

Custom Built

Bell Face
Modernistic Finish

Nail

Polished Poll

Lacquered Handle

Ripping

| | | | | | | | |
|-------------------|----|----|--------|---------------------|----|----|--------|
| 711 $\frac{1}{2}$ | 16 | 13 | \$4.00 | 711 $\frac{1}{2}$ R | 16 | 13 | \$4.00 |
| 713 | 7 | 12 | 3.60 | | | | |



No. 711 $\frac{1}{2}$ Custom Built Nail Hammer

*Double Duty

Bell Face
Plain Black Finish

Nail

Polished Face

Stained Handle

Ripping

| | | | | | | | |
|-------------------|----|----|--------|---------------------|----|----|--------|
| 611 $\frac{1}{2}$ | 16 | 13 | \$3.20 | 611 $\frac{1}{2}$ R | 16 | 13 | \$3.20 |
|-------------------|----|----|--------|---------------------|----|----|--------|

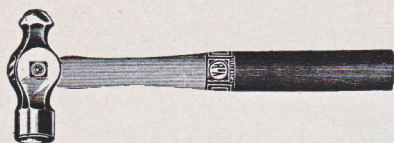


No. 611 $\frac{1}{2}$ Double Duty Nail Hammer

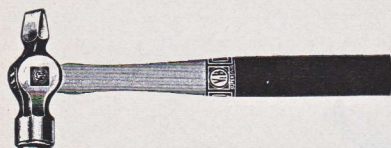
*Packed Doz. to a Box.

Vaughan Hammers

Ball Pein Hammers



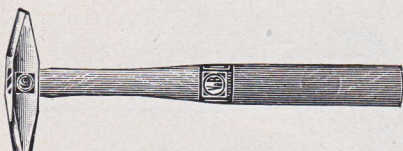
No. 2 Ball Pein Hammer



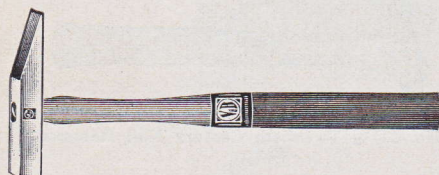
No. 2 Cross Pein Hammer



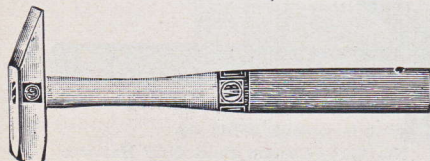
No. 2 Straight Pein Hammer



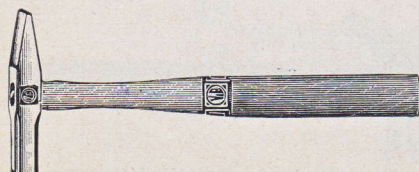
No. 1 Machinists' Riveting Hammer



No. 1 Tile Setters' Hammer



No. 1 Tinners' Panceing Hammer



No. 1 Tinners' Riveting Hammer

*Supersteel

*Value Brand

*Twentieth Century

| Wgt. Oz. | Lgth. Ins. | Polished | | Black Finish | | Black Forged Finish | |
|-------------|--------------------------------|----------|----------|--------------|----------|---------------------|----------|
| | | No. | Doz. Net | No. | Doz. Net | No. | Doz. Net |
| 2 | 10 ¹ / ₄ | 7/0 | \$7.60 | 7/0 B | \$6.00 | TC5/0 | \$5.20 |
| 4 | 11 | 5/0 | 7.60 | 5/0 B | 6.00 | | |
| 6 | 12 | 4/0 | 7.60 | 4/0 B | 6.00 | TC3/0 | 5.20 |
| 8 | 13 | 3/0 | 8.00 | 3/0 B | 6.40 | | |
| 12 | 14 | 2/0 | 8.00 | 2/0 B | 6.40 | TC2/0 | 5.20 |
| 16 | 14 | 0 | 8.40 | 0 B | 6.80 | TC0 | 5.60 |
| 20 | 15 | 1 | 8.80 | 1 B | 7.20 | TC1 | 6.00 |
| 24 | 16 | 2 | 9.60 | 2 B | 7.60 | TC2 | 6.40 |
| 28 | 17 | 3 | 10.40 | 3 B | 8.40 | TC3 | 6.80 |
| 32 | 17 | 4 | 11.20 | 4 B | 9.00 | TC4 | 7.20 |
| 40 | 17 ¹ / ₂ | 6 | 12.65 | 6 B | 10.00 | TC6 | 8.45 |
| 48 | 17 ¹ / ₂ | 8 | 14.65 | 8 B | 12.00 | TC8 | 9.75 |

*Cross Pein

Polished.

| No. | Wgt. Oz. | Lgth. Ins. | Doz. Net |
|-----|-------------|---------------|-------------|
| 2 | 24 | 16 | \$12.00 |
| 4 | 32 | 17 | 13.75 |

*Straight Pein

Polished.

| No. | Wgt. Oz. | Lgth. Ins. | Doz. Net |
|-----|-------------|---------------|-------------|
| 2 | 24 | 16 | \$12.00 |
| 4 | 32 | 17 | 13.75 |

Machinists' Riveting

Polished.

| No. | Wgt. Oz. | Lgth. Ins. | Doz. Net |
|-----|-------------|---------------|-------------|
| 0 | 4 | 11 | \$8.00 |
| 1 | 7 | 12 | 8.00 |
| 2 | 9 | 13 | 9.20 |
| 3 | 12 | 13 | 9.20 |
| 4 | 15 | 14 | 10.00 |
| 5 | 18 | 14 | 10.80 |

Saw Setting

Polished.

| No. | Wgt. Oz. | Lgth. Ins. | Doz. Net |
|-----|-------------|---------------|-------------|
| 1 | 8 | 12 | \$7.35 |

Tile Setters'

Polished.

| No. | Wgt. Oz. | Lgth. Ins. | Doz. Net |
|-----|-------------|-------------------------------|-------------|
| 1 | 3 | 9 ¹ / ₂ | \$7.00 |

Tinners' Panceing

Polished.

| No. | Wgt. Oz. | Lgth. Ins. | Doz. Net |
|-----|-------------|---------------|-------------|
| 1 | 8 | 13 | \$9.20 |
| 2 | 12 | 14 | 9.20 |
| 3 | 16 | 15 | 10.00 |
| 4 | 20 | 16 | 10.30 |

Tinners' Riveting

Polished.

| No. | Wgt. Oz. | Lgth. Ins. | Doz. Net |
|-----|-------------|---------------|-------------|
| 1 | 8 | 13 | \$9.20 |
| 2 | 12 | 14 | 9.20 |
| 3 | 16 | 15 | 10.00 |
| 4 | 20 | 16 | 10.30 |

*Packed 4 in a box.

Vaughan Hammers

Supersteel

Twentieth Century

*Blacksmiths' Hand

| Polished. | | | | Oil Finish. | | | |
|-----------|----------|-----------|----------|-------------|----------|-----------|----------|
| No. | Wgt. Oz. | Lgth. In. | Doz. Net | No. | Wgt. Oz. | Lgth. In. | Doz. Net |
| 0 | 24 | 15 | \$10.35 | TC0 | 24 | 15 | \$7.60 |
| 1 | 32 | 16 | 10.80 | TC1 | 32 | 16 | 7.60 |
| 2 | 40 | 16 | 12.00 | TC2 | 40 | 16 | 9.20 |
| 3 | 48 | 17 | 13.20 | TC3 | 48 | 17 | 10.00 |
| 5 | 64 | 17 | 16.00 | TC5 | 64 | 17 | 10.80 |



No. 2 Blacksmiths' Hand Hammer

*Single Face Engineers

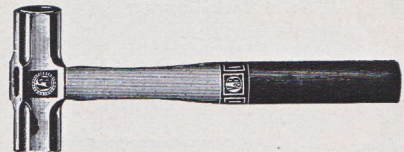
| Polished. | | | | Oil Finish. | | | |
|-----------|----------|-----------|----------|-------------|----------|-----------|----------|
| No. | Wgt. Oz. | Lgth. In. | Doz. Net | No. | Wgt. Oz. | Lgth. In. | Doz. Net |
| 1 | 24 | 15 | \$10.00 | TC1 | 24 | 15 | \$7.45 |
| 2 | 32 | 16 | 11.20 | TC2 | 32 | 16 | 7.45 |
| 3 | 40 | 16 | 12.00 | TC3 | 40 | 16 | 8.50 |
| 4 | 48 | 17 | 13.20 | TC4 | 48 | 17 | 9.70 |



No. 1 Single Face Engineers' Hammer

*Double Face Engineers

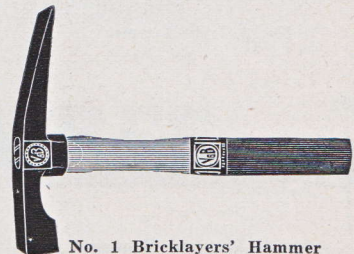
| Polished. | | | | Oil Finish. | | | |
|-----------|----------|-----------|----------|-------------|----------|-----------|----------|
| No. | Wgt. Oz. | Lgth. In. | Doz. Net | No. | Wgt. Oz. | Lgth. In. | Doz. Net |
| | | | | TC1 | 32 | 16 | \$7.45 |
| 2 | 40 | 16 | \$12.00 | TC2 | 40 | 16 | 8.50 |
| 3 | 48 | 17 | 13.20 | TC3 | 48 | 17 | 9.70 |
| | | | | TC5 | 64 | 17 | 10.80 |



No. 3 Double Face Engineers' Hammer

*Bricklayers' Hammers

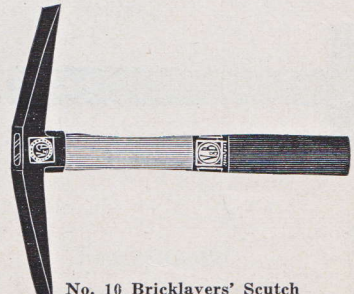
| Smooth Black Finish | | | | Black Finish | | | |
|---------------------|----------|-----------|----------|--------------|----------|-----------|----------|
| No. | Wgt. Oz. | Lgth. In. | Doz. Net | No. | Wgt. Oz. | Lgth. In. | Doz. Net |
| 0 | 20 | 10 1/2 | \$10.50 | | | | |
| 1 | 24 | 11 | 12.00 | TC1 | 24 | 11 | \$9.20 |
| 2 | 32 | 11 | 13.20 | TC2 | 32 | 11 | 10.00 |



No. 1 Bricklayers' Hammer

*Bricklayers' Scutches

| Smooth Black Finish | | | |
|---------------------|----------|-----------|----------|
| No. | Wgt. Oz. | Lgth. In. | Doz. Net |
| 10 | 24 | 11 | \$12.00 |
| 12 | 32 | 11 | 13.20 |



No. 10 Bricklayers' Scutch

Shoe

| Polished. | | | | Black Finish | | | |
|-----------|----------|-----------|----------|--------------|----------|-----------|----------|
| No. | Wgt. Oz. | Lgth. In. | Doz. Net | No. | Wgt. Oz. | Lgth. In. | Doz. Net |
| 1 | 14 | 10 | \$8.25 | 1B | 14 | 10 | \$5.33 |



No. 1 Shoe Hammer

*Packed 4 in a box.

Vaughan Hammers



No. 45 Billposters' Hammer

Bill Posters'

Magnetic
Polished.

| No. | Wgt. Oz. | Lgth. In. | Doz. Net |
|-----|-------------|--------------|-------------|
| 45 | 4 | 11½ | \$8.40 |
| 55 | 5 | 11½ | 8.75 |
| 85 | 8 | 11½ | 9.90 |
| 95 | 10 | 11½ | 12.00 |
| 56 | 5 | 36 | 20.40 |
| 86 | 8 | 36 | 21.00 |

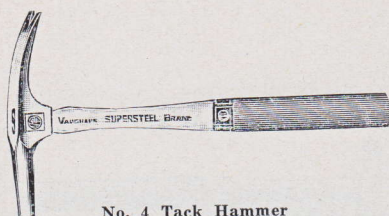
Bill Posters' Hammer Heads

Nickel Plated

| No. | Wgt. Oz. | Lgth. In. | Doz. Net |
|-----|-------------|--------------|-------------|
| 50 | 5 | 4 | \$8.40 |
| 80 | 8 | 4½ | 9.60 |

Bill Posters' Hammer Handles

| | | |
|-------------------|----|---------|
| J 36 | 36 | \$12.90 |
| Tack Spring . . . | | 1.05 |
| Card Spring . . . | | .60 |



No. 4 Tack Hammer

Tack

Non-Magnetic

Polished.

(Head has driving face & claw)

| No. | Wgt. Oz. | Lgth. In. | Doz. Net |
|-----|-------------|--------------|-------------|
| 4 | 6 | 11½ | \$8.40 |



No. 5 Tack Hammer

Magnetic

Polished Finish
(Head has magnetic driving face and claw)

| No. | Wgt. Oz. | Lgth. In. | Doz. Net |
|-----|-------------|--------------|-------------|
| 5 | 4 | 11½ | \$9.00 |

Magnetic

Black Finish.

(Head has magnetic driving face and claw)

| No. | Wgt. Oz. | Lgth. In. | Doz. Net |
|-----|-------------|--------------|-------------|
| 25 | 4 | 11½ | \$5.20 |



No. 6 Tack Hammer

Magnetic

(One end has driving face and one end has magnetic face)

| No. | Wgt. Oz. | Lgth. In. | Doz. Net |
|-----|-------------|--------------|-------------|
| 6 | 7 | 11½ | \$13.30 |
| 16 | 7 | 11½ | 16.96 |

No. 16 has claw on end of handle.



No. 10 Farriers' Hammer

Farriers'

Polished.

| | | | |
|----|----|----|---------|
| 10 | 10 | 13 | \$11.40 |
| 12 | 12 | 14 | 11.40 |

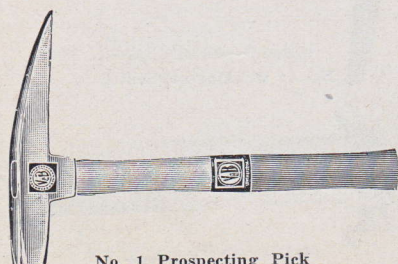


No. 0 Farriers' Turning Hammer

*Farriers' Turning

Polished Heads. Black Body.

| | | | |
|---|----|----|---------|
| 0 | 36 | 15 | \$21.35 |
|---|----|----|---------|



No. 1 Prospecting Pick

*Prospecting Picks

Supersteel

Polished

| No. | Wgt. Oz. | Lgth. In. | Doz. Net |
|-----|-------------|--------------|-------------|
| 1 | 16 | 13 | \$13.70 |
| 2 | 24 | 13 | 14.95 |

Twentieth Century

Black Finish

| No. | Wgt. Oz. | Lgth. In. | Doz. Net |
|-----|-------------|--------------|-------------|
| TC1 | 16 | 13 | \$10.65 |
| TC2 | 24 | 13 | 11.35 |

*Packed 4 in a box.



VAUGHAN

No. 99

PROFESSIONAL CARPENTER'S HATCHET

**Designed to combine in one tool the various
uses of all the old hatchet patterns**

9 BIG FEATURES

- 1** With a Vaughan 99 in a tool box, no other hatchet is needed.
- 2** Long crescent bevel of draw knife shape for fast and close cutting.
- 3** Special crowned blade (Pat. D-115-256), higher in center and flowing each way, preventing binding.
- 4** The patented fluted handle gives cushion action, absorbs shock.
- 5** Specially designed handle to fit your hand with bell shaped end to prevent slipping.
- 6** Sufficient weight in head for faster and easier cutting.
- 7** A perfectly balanced tool, making cutting and driving easier.
- 8** Ideal weight. It feels light in the hand, but has sufficient weight for heavy work.
- 9** Finest quality, highly finished for professional use.

Professional

Full Polished.

Finest Grade White Hickory
Handle

| No. | Lgth. In. | Wgt. Oz. | Cut | Doz. Net |
|-----|--------------|-------------|-----|-------------|
| 99 | 13½ | 24 | 3½ | \$18.00 |

Packed ⅓ dozen to a box

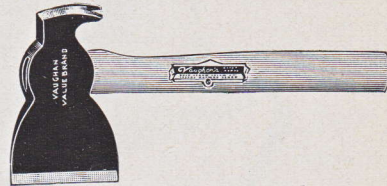
Vaughan Hatchets

V & B HATCHETS are DROP FORGED from bars of high grade supersteel. Sub-
jected to special heat treatment and individually tempered, they have a cutting edge
that remains keen.

V & B Hatchets are equipped with second growth hickory handles so designed to fit the
hand perfectly and the swell end prevents the tool from easily slipping out of the hand.
All patterns have thin bits for rapid cutting.



Supersteel Broad Hatchet



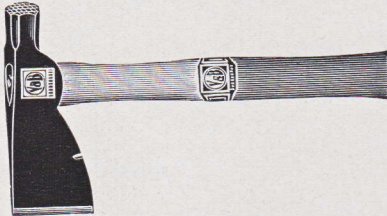
Value Brand Claw Hatchet



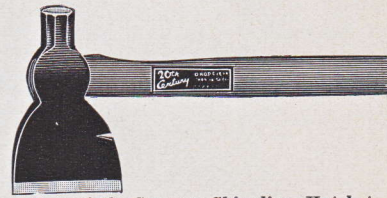
Supersteel Half Hatchet



Value Brand Flooring Hatchet



Supersteel Lathing Hatchet



Twentieth Century Shingling Hatchet

Supersteel

Patent Leather Finish
Two-Tone Hickory Handle
or
Polished Blade & Bronze Body
White Hickory Handle

Broad

| No. | Lgth. In. | Wgt. Oz. | Cut | Doz. Net |
|-----|--------------|-------------|-------|-------------|
| 1 | 13 1/2 | 24 | 4 | \$16.00 |
| 2 | 14 1/2 | 28 | 4 1/2 | 16.00 |
| 3 | 18 1/2 | 36 | 5 | 18.00 |
| 4 | 18 1/2 | 42 | 5 1/2 | 20.00 |

Half

| | | | | |
|---|----|----|-------|---------|
| 1 | 12 | 15 | 3 1/4 | \$12.00 |
| 2 | 13 | 22 | 3 5/8 | 12.00 |
| 3 | 13 | 27 | 4 | 13.20 |

Shingling

| | | | | |
|---|--------|----|-------|---------|
| 1 | 12 1/2 | 17 | 3 1/2 | \$12.00 |
| 2 | 13 1/2 | 23 | 4 | 12.00 |

Lathing

| | | | | |
|---|----|----|-------|---------|
| 1 | 12 | 14 | 2 1/4 | \$12.00 |
| 2 | 12 | 17 | 2 1/2 | 12.00 |

Claw

| | | | | |
|---|--------|----|-------|---------|
| 1 | 12 1/2 | 19 | 3 1/2 | \$14.00 |
| 2 | 13 1/2 | 25 | 4 | 14.00 |

Flooring

| | | | | |
|---|--------|----|-------|---------|
| 1 | 12 1/2 | 24 | 3 3/4 | \$16.00 |
| 2 | 13 | 28 | 4 1/4 | 16.00 |

Value Brand

Smooth Black Finish
Sound White Lacquered
Hickory Handle

Broad

| No. | Wgt. Oz. | Cut | Doz. Net |
|-----|-------------|-------|-------------|
| 801 | 24 | 4 | \$14.40 |
| 802 | 28 | 4 1/2 | 14.40 |
| 803 | 36 | 5 | 16.00 |
| 804 | 42 | 5 1/2 | 18.00 |

Half

| | | | |
|-----|----|-------|---------|
| 801 | 15 | 3 1/4 | \$10.40 |
| 802 | 22 | 3 5/8 | 10.40 |
| 803 | 27 | 4 | 11.60 |

Shingling

| | | | |
|-----|----|-------|---------|
| 801 | 17 | 3 1/2 | \$10.40 |
| 802 | 23 | 4 | 10.40 |

Lathing

| | | | |
|-----|----|-------|---------|
| 801 | 14 | 2 1/4 | \$10.40 |
| 802 | 17 | 2 1/2 | 10.40 |

Claw

| | | | |
|-----|----|-------|---------|
| 801 | 19 | 3 1/2 | \$12.00 |
| 802 | 25 | 4 | 12.00 |

Flooring

| | | | |
|-----|----|-------|---------|
| 801 | 24 | 3 3/4 | \$14.40 |
| 802 | 28 | 4 1/4 | 14.40 |

Twentieth Century Brand

Forge Finish
Stained Hickory Handle

Broad

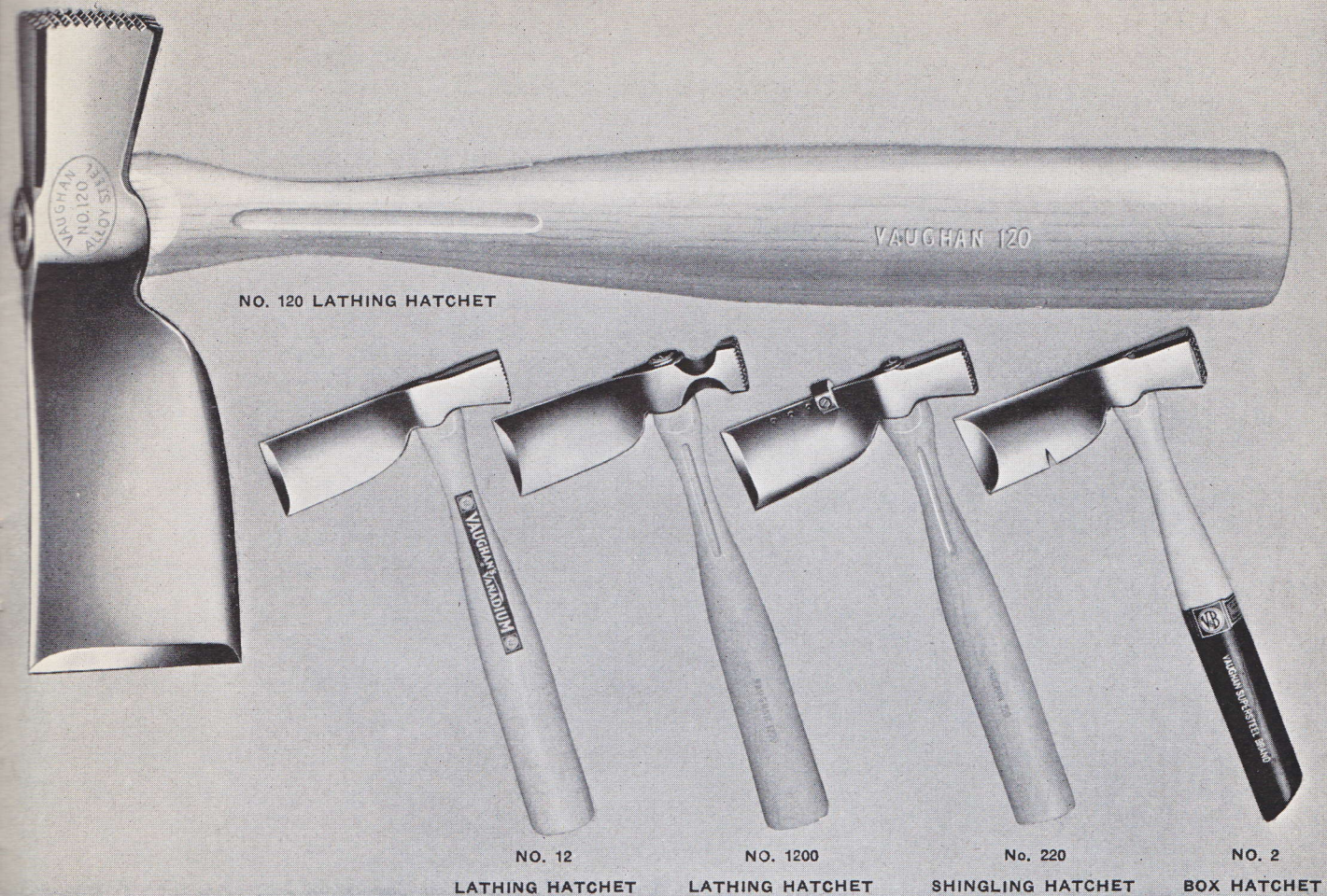
| No. | Wgt. Oz. | Cut | Doz. Net |
|-----|-------------|-------|-------------|
| 501 | 24 | 4 | \$12.00 |
| 502 | 28 | 4 1/2 | 12.00 |
| 503 | 36 | 5 | 14.00 |

Half

| | | | |
|-----|----|-------|--------|
| 501 | 15 | 3 1/4 | \$8.00 |
| 502 | 22 | 3 5/8 | 8.00 |

Shingling

| | | | |
|-----|----|-------|--------|
| 501 | 17 | 3 1/2 | \$8.00 |
| 502 | 23 | 4 | 8.00 |



Vaughan Hatchets

Professional Lathing and Shingling Hatchets

ALLOY STEEL—SPRING HANDLE

The alloy steel and proper heat treatment give Vaughan's 120, 1200 and 220 Hatchets longer service.

The thin blade is a feature on Vaughan's 120, 1200 and 220 Hatchets.

The safety wedge prevents head flying off.

The head can be easily tightened by driving handle through and then filing protruding wood and replacing washer and screw.

The fluted spring handle (Pat. 2,184,985 & D-108709) provides flexibility, making driving less tiresome and providing better balance to the tool.

Standard Underhill Pattern Lathing Hatchets and Supersteel Box Hatchets

These hatchets are forged from highest grade alloy steel. They are perfectly balanced and are designed to give long and satisfactory service

Special Underhill Pattern Lathing Alloy Steel

| No. | Wgt. Oz. | Cut | Doz. Net |
|---|----------|-------|----------|
| 12 Row Oval Face Square Neck—Spring Handle Safety Wedge | | | |
| 120 | 14 | 2 1/8 | \$23.33 |
| Packed in individual carton | | | |
| Hexagon Neck—Spring Handle Safety Wedge | | | |
| 1200 | 12 | 2 1/8 | \$24.00 |
| Packed in individual carton | | | |

Special Underhill Pattern Shingling With Gauge

| No. | Wgt. Oz. | Cut | Doz. Net |
|---|----------|-------|----------|
| 12 Row Oval Face—Alloy Steel Square Neck—Spring Handle Safety Wedge | | | |
| 220 | 14 | 2 1/8 | \$23.33 |
| Packed in individual carton | | | |

Standard Underhill Pattern Lathing Alloy Steel

| | | | |
|--|----|-------|---------|
| 9 Row Flat Face Square Neck—Standard Handle | | | |
| 9 | 14 | 2 1/8 | \$20.00 |
| 12 Row Oval Face Square Neck—Standard Handle | | | |
| 12 | 14 | 2 1/8 | 20.00 |
| Sheaths..... | | | 3.50 |

Box Hatchets

| | | | |
|-----------------------------|----|-------|---------|
| Alloy Steel Polished Finish | | | |
| 12 Row Oval Face | | | |
| 1 | 12 | 2 1/8 | \$20.00 |
| 2 | 16 | 2 1/4 | 20.00 |
| 3 Long Handle-15" | | | |
| | 16 | 2 1/4 | 20.00 |

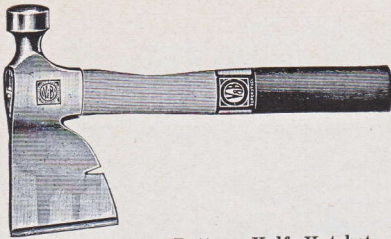
Vaughan Hatchets

Haines Pattern Hatchets

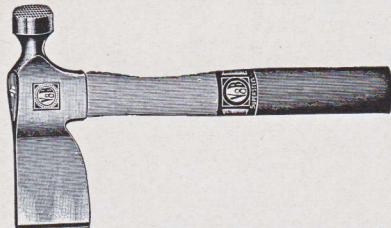
The Haines Pattern Hatchets are light weight and have thin bits. They are designed for fine finishing work, and are especially adapted for expert carpenters and mechanics.

Full Polished

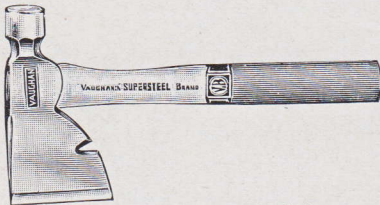
Two-Tone Hickory Handle



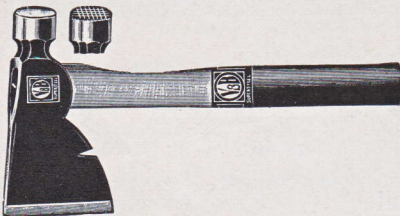
No. 101 Haines Pattern Half Hatchet



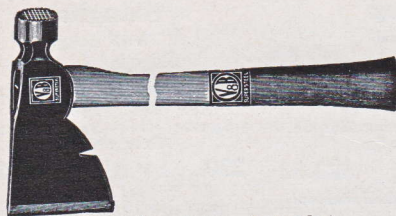
No. 101 Haines Pattern Lathing Hatchet



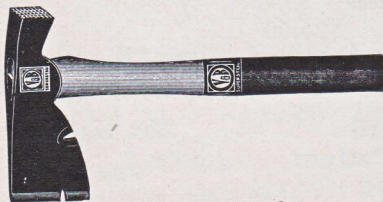
No. 82 Tradesman Hatchet



No. 2 Car Builders' Hatchet



No. 2 Rig Builders' Hatchet



No. 1 Barreling Hatchet



No. 0 Produce Hatchet

Haines Pattern Half

| No. | Lgth. Ins. | Wgt. Oz. | Cut | Doz. Net |
|-----|---------------|-------------|-----|-------------|
| 101 | 12½ | 16 | 3¼ | \$18.00 |
| 102 | 13 | 19 | 3½ | 18.00 |

Haines Pattern Lathing

| | | | | |
|-----|-----|----|----|---------|
| 101 | 12½ | 14 | 2⅛ | \$18.00 |
|-----|-----|----|----|---------|

Haines Pattern Shingling

| | | | | |
|-----|-----|----|----|---------|
| 101 | 12½ | 17 | 3½ | \$18.00 |
|-----|-----|----|----|---------|

Tradesman's

Full Polished.

Single Bevel

| | | | | |
|----|-----|----|----|---------|
| 72 | 13½ | 22 | 3½ | \$16.00 |
|----|-----|----|----|---------|

Double Bevel

| | | | | |
|----|-----|----|----|---------|
| 82 | 13½ | 22 | 3½ | \$16.00 |
|----|-----|----|----|---------|

Car Builders'

Patent Leather Finish

Smooth Head

| | | | | |
|---|-----|----|----|---------|
| 2 | 13½ | 22 | 3½ | \$15.20 |
| 3 | 14½ | 30 | 3¾ | 17.25 |

Scored Head

| | | | | |
|-----|-----|----|----|---------|
| S 2 | 13½ | 22 | 3½ | \$16.00 |
| S 3 | 14½ | 30 | 3¾ | 18.00 |

Rig Builders'

Patent Leather Finish

Scored Head

| | | | | |
|---|----|----|----|---------|
| 2 | 17 | 23 | 3½ | \$18.00 |
|---|----|----|----|---------|

Barreling

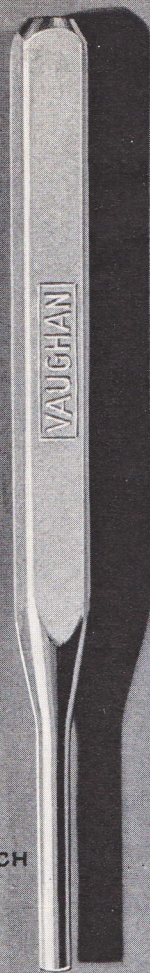
Patent Leather Finish

| | | | | |
|---|----|----|----|---------|
| 1 | 12 | 12 | 2⅜ | \$12.00 |
| 2 | 12 | 14 | 2½ | 12.00 |

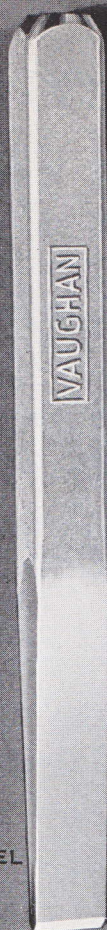
Produce

Patent Leather Finish

| | | | | |
|---|-----|----|---|---------|
| 0 | 10½ | 10 | 2 | \$12.00 |
|---|-----|----|---|---------|



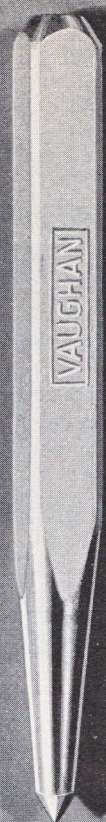
PIN PUNCH



COLD CHISEL



PRICK PUNCH



CENTER PUNCH



LONG TAPER PUNCH

Vaughan Alloy Square Punches and Chisels

Vaughan Alloy Square Punches and Chisels are forged from extra refined, beveled, square alloy steel and are carefully tempered and individually tested. The cadmium plated finish with polished heads and tapers prevents rusting. The beveled square steel keeps the tools from rolling and affords a more comfortable grip. Ideal for automotive use as well as around the house and farm.

No. 70 Cold Chisels

Order by No. and
Size of Steel

| Steel | Cut | Length | Doz. Net. |
|-------|-----|--------|--------------|
| 1/4 | 1/4 | 5 | \$2.30 |
| 1/2 | 1/2 | 6 | 2.65 |
| 5/8 | 5/8 | 7 | 3.15 |
| 3/4 | 3/4 | 7 1/2 | 3.95 |

Center Punches

Order by Number

| No. | Steel Length | Doz. Net. |
|-----|--------------|--------------|
| 79 | 1/2 5 1/4 | \$2.30 |

Pin Punches

Order by Number

| No. | Point | Steel Length | Doz. Net. |
|-----|-------|--------------|--------------|
| 73 | 3/32 | 1/4 4 1/2 | \$2.30 |
| 74 | 1/8 | 1/4 4 7/8 | 2.30 |
| 75 | 5/32 | 5/16 5 1/2 | 2.30 |
| 76 | 3/16 | 3/8 5 3/4 | 2.30 |
| 77 | 7/32 | 7/16 6 1/8 | 2.30 |

Prick Punches

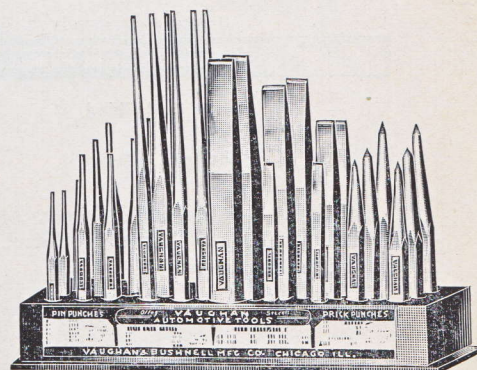
Order by Number

| No. | Steel Length | Doz. Net. |
|-----|--------------|--------------|
| 78 | 3/8 5 | \$2.30 |
| 79 | 1/2 6 | 2.30 |

Long Taper Machine Punches

Order by Number

| No. | Point | Steel Length | Doz. Net. |
|-----|-------|--------------|--------------|
| 703 | 3/32 | 5/16 9 | \$2.65 |
| 704 | 1/32 | 3/8 9 | 2.65 |
| 705 | 5/32 | 7/16 9 | 2.65 |



No. 700 ASSORTMENT

Assortment consists of 2 each of the Punches and Chisels listed, with one Wooden Display Block, which will hold all 30 of the tools, furnished free. This display is adapted for counter or show window, helping to greatly increase the sale of this class of tools.

VAUGHAN AUTOMOTIVE PUNCH & CHISEL ASSORTMENT No. 700

Consists of 2 each of the above Punches and Chisels with one Wooden Display Block, which will hold all 30 of the tools, furnished free.

No. 700 Punch and Chisel Assortment.....Each \$6.40

Packed 1 to a box.

Vaughan Cold Chisels

Order by number and Diameter of Steel



No. 25 Cold Chisel

Octagon Alloy Steel

Polished taper, black body, making a very attractive tool. We recommend this Chisel for hard work.

No. 25—Alloy Steel

| Steel | Cut | Lgth. In. | Doz. Net | Steel | Cut | Lgth. In. | Doz. Net |
|-------|------|-----------|----------|-------|-------|-----------|----------|
| 1/4 | 5/16 | 5 | \$1.90 | 1/2 | 5/8 | 6 | \$2.65 |
| 5/16 | 3/8 | 5 1/4 | 2.00 | 5/8 | 3/4 | 7 | 3.20 |
| 3/8 | 7/16 | 5 1/2 | 2.20 | 3/4 | 7/8 | 7 1/2 | 4.15 |
| 7/16 | 1/2 | 6 | 2.40 | 7/8 | 1 | 8 | 5.10 |
| | | | | 1 | 1 1/8 | 8 1/2 | 6.00 |



No. 45 Cold Chisel

Octagon Steel

Regular Taper. Polished and Gun Metaled. Natural Finish Body. This Chisel is the Standard Pattern, first quality.

No. 45

| | | | | | | | |
|------|------|-------|--------|-----|-------|-------|--------|
| 1/4 | 5/16 | 5 | \$1.80 | 1/2 | 5/8 | 6 | \$2.50 |
| 5/16 | 3/8 | 5 1/4 | 1.90 | 5/8 | 3/4 | 7 | 3.00 |
| 3/8 | 7/16 | 5 1/2 | 2.10 | 3/4 | 7/8 | 7 1/2 | 4.00 |
| 7/16 | 1/2 | 6 | 2.30 | 7/8 | 1 | 8 | 4.85 |
| | | | | 1 | 1 1/8 | 8 1/2 | 5.70 |

No. 45—Ex. Lengths

| Steel | Cut | Lgth. In. | Doz. Net |
|-------|-------|-----------|----------|
| 5/8 | 3/4 | 12 | \$4.50 |
| 3/4 | 7/8 | 12 | 5.80 |
| 1 | 1 1/8 | 12 | 8.40 |

No. 60

| Steel | Cut | Lgth. In. | Doz. Net | Steel | Cut | Lgth. In. | Doz. Net |
|-------|------|-----------|----------|-------|-----|-----------|----------|
| 1/4 | 1/4 | 5 | \$1.20 | 1/2 | 1/2 | 6 | \$1.90 |
| 5/16 | 5/16 | 5 1/4 | 1.35 | 5/8 | 5/8 | 7 | 2.40 |
| 3/8 | 3/8 | 5 1/2 | 1.45 | 3/4 | 3/4 | 7 1/2 | 3.20 |
| 7/16 | 7/16 | 6 | 1.60 | 7/8 | 7/8 | 8 | 4.15 |
| | | | | 1 | 1 | 8 1/2 | 4.80 |



No. 60 Cold Chisel

Octagon Steel

Straight Side Polished Taper. Attractive Black Finish. A special Chisel with cut same size as steel.

No. 60—Ex. Lengths

| Steel | Cut | Lgth. In. | Doz. Net |
|-------|-----|-----------|----------|
| 1/2 | 1/2 | 12 | \$3.48 |
| 5/8 | 5/8 | 18 | 4.83 |
| 3/4 | 3/4 | 12 | 4.60 |
| 3/4 | 3/4 | 18 | 5.93 |
| 7/8 | 7/8 | 12 | 5.95 |
| 7/8 | 7/8 | 18 | 7.57 |
| 1 | 1 | 12 | 6.50 |
| 1 | 1 | 18 | 9.27 |



No. 40 Cold Chisel

Hexagon Steel
Standard Grade
Regular Taper
Black Finish

No. 40

| Steel | Cut | Lgth. In. | Doz. Net | Steel | Cut | Lgth. In. | Doz. Net |
|-------|------|-----------|----------|-------|-------|-----------|----------|
| 1/4 | 5/16 | 5 | \$0.85 | 1/2 | 5/8 | 6 | \$1.25 |
| 5/16 | 3/8 | 5 1/4 | .90 | 5/8 | 3/4 | 7 | 1.75 |
| 3/8 | 7/16 | 5 1/2 | .95 | 3/4 | 7/8 | 7 1/2 | 2.25 |
| 7/16 | 1/2 | 6 | 1.15 | 7/8 | 1 | 8 | 3.20 |
| | | | | 1 | 1 1/8 | 8 1/2 | 4.00 |

Vaughan Chisels

Order by number and Size of Cut.

Cape Chisels

No. 50

| Cut | Steel | Lgth. In. | Doz. Net |
|------|-------|-----------|----------|
| 3/16 | 1/4 | 5 | \$2.50 |
| 1/4 | 5/8 | 7 | 3.00 |
| 5/16 | 5/8 | 7 | 3.00 |
| 3/8 | 5/8 | 7 | 3.00 |
| 1/2 | 3/4 | 7 1/2 | 4.00 |
| 5/8 | 3/4 | 7 1/2 | 4.00 |
| 3/4 | 7/8 | 7 1/2 | 5.00 |



No. 50 Cape Chisel

Forged from Extra Refined Octagon Steel. Polished Blade and Head. Black Finish Body.

Diamond Point Chisels

No. 55

| | | | |
|------|------|-------|--------|
| 3/16 | 5/16 | 5 | \$2.50 |
| 1/4 | 5/8 | 7 1/4 | 3.30 |
| 5/16 | 5/8 | 7 1/4 | 3.30 |
| 3/8 | 5/8 | 7 1/4 | 3.30 |
| 1/2 | 3/4 | 7 1/4 | 4.50 |



No. 55 Diamond Point Chisel

Forged from Extra Refined Octagon Steel. Polished Blade and Head. Black Finish Body.

Round Nose Chisels

No. 65

| | | | |
|------|------|-------|--------|
| 3/16 | 5/16 | 5 | \$2.50 |
| 1/4 | 5/8 | 6 3/4 | 3.30 |
| 5/16 | 5/8 | 7 | 3.30 |
| 3/8 | 5/8 | 7 | 3.30 |
| 1/2 | 3/4 | 7 1/4 | 4.50 |



No. 65 Round Nose Chisel

Forged from Extra Refined Octagon Steel. Polished Blade and Head. Black Finish Body.

Plumbers' Steel Wood Chisels

| | | | |
|-------|-----|--------|--------|
| 3/4 | 1/2 | 10 | \$5.33 |
| 1 | 5/8 | 11 | 6.00 |
| 1 1/4 | 3/4 | 11 1/2 | 6.66 |



Plumbers' Steel Wood Chisel

Forged Steel, Polished Blade, Black Finish Body.

Wrecking Chisels

Curved Pattern

| No. | Size | Length | Price |
|-----|------|--------|--------|
| 14 | 3/4 | 18 | \$5.66 |

Straight Pattern With Slot

| No. | Size | Length | Price |
|-----|------|--------|--------|
| 15 | 3/4 | 18 | \$6.00 |



No. 14 Wrecking Chisel

Black Finish with Red Tip, 2-Inch Bit.



No. 15 Wrecking Chisel

Black Finish with Red Tip,

Floor Chisel

| Cut | Steel | Lgth. In. | Doz. Net |
|-------|-------|-----------|----------|
| 2 | 5/8 | 10 | \$6.05 |
| 2 1/2 | 5/8 | 11 | 6.78 |
| 3 | 5/8 | 12 | 7.57 |
| 3 1/2 | 3/4 | 15 | 8.38 |



Floor Chisel

Black Shank—Polished Blade

Floor Chisel has thin blade, enabling easy cutting of the tongue on matched flooring without marring the surface. Every carpenter, plumber and electrician should have this chisel in his kit.

*Concrete Chisels

| Size Steel | Length Inches | Price |
|------------|---------------|--------|
| 7/8 | 12 | \$6.00 |
| 1 | 12 | 7.00 |
| 1 | 18 | 9.00 |
| 1 1/8 | 18 | 12.00 |
| 1 1/8 | 24 | 13.00 |
| 1 1/4 | 18 | 14.00 |
| 1 1/4 | 24 | 15.00 |



Concrete Chisel

Black Finish—Red Tip—Hexagon Steel

V & B Concrete Chisels are designed especially for breaking through sections of concrete or street pavements. They are made of extra heavy steel and are individually tempered and tested.

*Packed loose.

Vaughan Octagon Tools

Star Drills receive severe usage and must be made right in order to give satisfactory service. V & B Star Drills are made of Octagon Alloy Steel. They are individually tempered and individually tested. Double Duty Drills are forged from Hexagon Tool Steel.

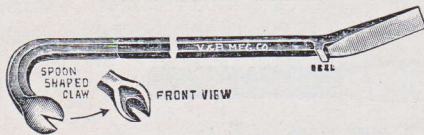
Special attention is called to the countersink shaped Point which centers the drill and facilitates cutting. The long grooves allow clearance for the brick and cement.



V & B Alloy Star Drill

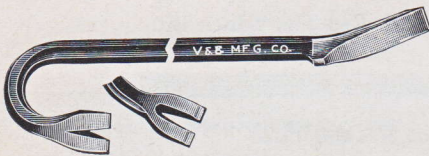


Double Duty Star Drill



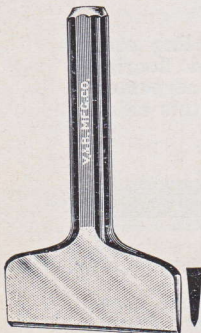
No. 324-330 Wrecking Bar

The Gooseneck end of these Wrecking Bars is painted red, the balance black. A very neat Bar. Special attention is called to the Spoon-shaped Claw, designed for pulling spikes, and to the Heel on the prying end. The back of the claw is curved to readily engage the spike.



No. 12-18-24-30-36 Wrecking Bar

A new design recessed claw with longer and narrower slot for pulling nails. The back of claw is flat for ripping purposes. Black finish with red tip.



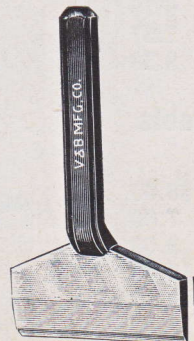
No. 13 1/2
Bricklayers'
Chisel

Bricklayers' Chisels

Straight Shank

| No. | Cut | Lgth. In. | Doz. Net |
|--------|-------|--------------|-------------|
| 12 1/2 | 2 1/2 | 6 3/4 | \$5.28 |
| 13 | 3 | 6 3/4 | 5.58 |
| 13 1/2 | 3 1/2 | 7 1/2 | 5.88 |
| 14 | 4 | 7 1/2 | 6.18 |
| 14 1/2 | 4 1/2 | 7 1/2 | 6.60 |

Forged Steel, Black Finish Body,
Polished Finish Head and Blade,
Oil Tempered.



No. 3 1/2
Bricklayers'
Set

Bricklayers' Sets

Offset Shank

| No. | Cut | Lgth. In. | Doz. Net |
|-------|-------|--------------|-------------|
| 2 1/2 | 2 1/2 | 6 3/4 | \$5.28 |
| 3 | 3 | 6 3/4 | 5.58 |
| 3 1/2 | 3 1/2 | 6 3/4 | 5.88 |
| 4 | 4 | 7 | 6.18 |
| 4 1/2 | 4 1/2 | 7 1/4 | 6.60 |

Forged Steel, Black Finish Body,
Polished Finish Head and Blade,
Oil Tempered.

Star Drills

V & B

Octagon Alloy Steel
Black Finish
Polished Wings and Flutes

12 inch length

| Size In. | Wgt. Lbs. Per Doz. | Doz. Net |
|----------|-----------------------|-------------|
| 1/4 | 2 1/4 | \$2.83 |
| 5/16 | 3 1/4 | 2.83 |
| 3/8 | 3 1/4 | 2.83 |
| 7/16 | 4 1/4 | 3.00 |
| 1/2 | 4 1/2 | 3.33 |
| 5/8 | 8 | 4.00 |
| 3/4 | 12 | 4.65 |
| 7/8 | 17 | 5.32 |
| 1 | 22 | 6.00 |
| 1 1/8 | 23 | 7.98 |
| 1 1/4 | 24 | 9.98 |
| 1 1/2 | 26 | 16.63 |

18 inch length

| | | |
|-------|--------|--------|
| 3/8 | 43 3/4 | \$3.66 |
| 1/2 | 7 | 4.16 |
| 5/8 | 12 | 5.00 |
| 3/4 | 19 | 5.83 |
| 7/8 | 27 | 6.65 |
| 1 | 36 | 7.50 |
| 1 1/8 | 37 | 9.31 |
| 1 1/4 | 38 | 11.64 |
| 1 1/2 | 52 | 18.62 |

Double Duty

Black Finish
Hexagon Steel

12 inch length

| Size In. | Wgt. Lbs. Per Doz. | Doz. Net |
|----------|-----------------------|-------------|
| 1/4 | 2 1/4 | \$1.70 |
| 5/16 | 3 1/4 | 1.70 |
| 3/8 | 3 1/4 | 1.70 |
| 7/16 | 4 1/4 | 1.80 |
| 1/2 | 4 1/2 | 2.00 |
| 5/8 | 8 | 2.40 |
| 3/4 | 12 | 2.80 |
| 7/8 | 17 | 3.20 |
| 1 | 22 | 3.60 |
| 1 1/8 | 23 | 4.80 |
| 1 1/4 | 24 | 6.00 |
| 1 1/2 | 26 | 10.00 |

18 inch length

| | | |
|-------|--------|--------|
| 3/8 | 43 3/4 | \$2.20 |
| 1/2 | 7 | 2.50 |
| 5/8 | 12 | 3.00 |
| 3/4 | 19 | 3.50 |
| 7/8 | 27 | 4.00 |
| 1 | 36 | 4.50 |
| 1 1/8 | 37 | 5.60 |
| 1 1/4 | 38 | 7.00 |
| 1 1/2 | 52 | 11.20 |

All Star Drills packed as follows: 1/4 to 3/4 inch, twelve in a box, 7/8 inch and larger, six in a box.

*Wrecking Bars

Black Finish—Red Bend

Octagon Steel

| No. | Lgth. In. | Steel | Doz. Net |
|-----|--------------|-------|-------------|
| 324 | 24 | 3/4 | \$6.00 |
| 330 | 30 | 3/4 | 6.66 |

Black Finish—Red Tip

Octagon Steel

| No. | Lgth. In. | Steel | Doz. Net |
|-----|--------------|-------|-------------|
| 12 | 12 | 1/2 | 3.33 |
| 18 | 18 | 5/8 | 4.00 |
| 24 | 24 | 3/4 | 4.66 |
| 30 | 30 | 3/4 | 5.33 |
| 36 | 36 | 7/8 | 6.00 |

*Packed Loose

Vaughan Punches

Machine Punches

Octagon Steel

Special Taper. Polished.
Gun-Metalled.

| No. | Size | Doz. Net | No. | Size | Doz. Net |
|-----|--|----------|-----|--|----------|
| 11 | $\frac{3}{32} \times \frac{1}{2} \times 6$ | \$2.27 | 15 | $\frac{4}{32} \times \frac{3}{8} \times 6$ | \$2.27 |
| 12 | $\frac{7}{32} \times \frac{1}{2} \times 6$ | 2.27 | 16 | $\frac{3}{32} \times \frac{3}{8} \times 6$ | 2.27 |
| 13 | $\frac{6}{32} \times \frac{1}{2} \times 6$ | 2.27 | 80 | $\frac{3}{16} \times \frac{1}{2} \times 8$ | 2.77 |
| 14 | $\frac{5}{32} \times \frac{3}{8} \times 6$ | 2.27 | 90 | $\frac{7}{32} \times \frac{5}{8} \times 9$ | 3.35 |
| | | | 100 | $\frac{1}{4} \times \frac{3}{4} \times 10$ | 4.83 |

Hexagon Steel

Regular Taper. Polished.
Black Body

| | | | | | |
|----|--|--------|----|--|--------|
| 41 | $\frac{8}{32} \times \frac{1}{2} \times 6$ | \$2.00 | 46 | $\frac{3}{32} \times \frac{1}{2} \times 6$ | \$2.00 |
| 42 | $\frac{7}{32} \times \frac{1}{2} \times 6$ | 2.00 | 8 | $\frac{5}{32} \times \frac{1}{2} \times 8$ | 2.50 |
| 43 | $\frac{6}{32} \times \frac{1}{2} \times 6$ | 2.00 | 9 | $\frac{3}{16} \times \frac{5}{8} \times 9$ | 2.77 |
| 44 | $\frac{5}{32} \times \frac{1}{2} \times 6$ | 2.00 | 10 | $\frac{1}{4} \times \frac{3}{4} \times 10$ | 3.67 |
| 45 | $\frac{4}{32} \times \frac{1}{2} \times 6$ | 2.00 | | | |

Hexagon Steel

Regular Taper
Black Finish

| | | | | | |
|---|--|--------|---|--|--------|
| 1 | $\frac{8}{32} \times \frac{1}{2} \times 6$ | \$1.32 | 4 | $\frac{5}{32} \times \frac{1}{2} \times 6$ | \$1.32 |
| 2 | $\frac{7}{32} \times \frac{1}{2} \times 6$ | 1.32 | 5 | $\frac{4}{32} \times \frac{1}{2} \times 6$ | 1.32 |
| 3 | $\frac{6}{32} \times \frac{1}{2} \times 6$ | 1.32 | 6 | $\frac{3}{32} \times \frac{1}{2} \times 6$ | 1.32 |

Lining-Up or Drift Punch

Alloy Steel

Forged Knurled Polished

| No. | Size | Doz. Net |
|-----|--|----------|
| 70 | $\frac{3}{16} \times \frac{1}{2} \times 9$ | \$3.40 |

Pin Punches

Alloy Steel

Forged Knurled Polished

| | | |
|----|--|--------|
| 21 | $\frac{3}{32} \times \frac{3}{8} \times 4$ | \$1.55 |
| 23 | $\frac{3}{16} \times \frac{1}{2} \times 6$ | 2.30 |

*Center Punches

Alloy Steel

Forged Knurled Polished

| | | |
|-----|------------------------|--------|
| 50 | $\frac{3}{8} \times 4$ | \$1.55 |
| 145 | $\frac{1}{2} \times 6$ | 2.30 |

*Prick Punches

Alloy Steel

Forged Knurled Polished

| | | |
|-----|------------------------|--------|
| 50 | $\frac{3}{8} \times 4$ | \$1.55 |
| 145 | $\frac{1}{2} \times 6$ | 2.30 |

*Packed 12 in a box.



Nos. 11 to 100 Machine Punch. Special Taper—
Polished Gun Metal Finish



Nos. 41 to 10 Machine Punch. Regular Taper—
Polished Black Body



Nos. 1 to 6 Machine Punch
Regular Taper—Black Finish



No. 70 Lining-Up or Drift Punch



No. 23 Pin Punch



No. 50 Center Punch



No. 50 Prick Punch

Vaughan Pincers, Nippers and Small Tools



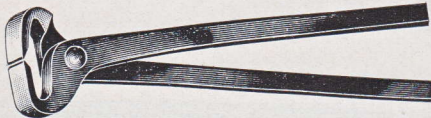
No. 6 to 12 Carpenter Pincer with Wire Cutter
Polished Jaws. Black Painted Handles.



No. 206 to 212 Carpenter Pincer
without Wire Cutter
Polished Jaws. Black Painted Handles.



No. 10 Blacksmith Pincer
Polished Jaws. Black Painted Handles.



No. 64 Nippers
Polished Jaws. Black Painted Handles.



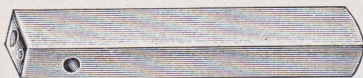
No. 30 Nippers
Polished Jaws. Black Painted Handles.



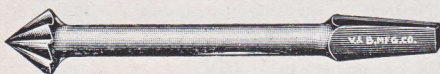
No. 212 Hoof Parer
Polished Jaws. Black Painted Handles, Lap Joint.



Tinners' Rivet Sets
Gun Metal Finish



Farmers' Rivet Sets
Natural Finish



No. 14 Countersink Bit
Gun Metal Finish
Rose Pattern for Brass



No. 15 Countersink Bit
Gun Metal Finish
Snail Pattern for Wood

Pincers

Carpenters'

| No. | Lgth. In. | Wgt. Doz. | Doz. Net |
|-----|--------------|--------------|-------------|
| 6 | 6 | 5 1/2 | \$5.80 |
| 8 | 8 | 10 | 6.40 |
| 10 | 10 | 15 | 7.60 |
| 12 | 12 | 18 | 8.80 |
| 206 | 6 | 5 | 5.20 |
| 208 | 8 | 9 1/2 | 5.80 |
| 210 | 10 | 14 | 7.00 |
| 212 | 12 | 17 | 8.20 |

Blacksmiths'

| | | | |
|----|----|----|--------|
| 10 | 10 | 17 | \$9.00 |
| 12 | 12 | 21 | 9.50 |
| 14 | 14 | 24 | 10.00 |

Nippers

Double Duty Cutting

| | | | |
|----|----|----|---------|
| 64 | 14 | 24 | \$12.00 |
|----|----|----|---------|

Nail Cutting

| | | | |
|----|----|--------|---------|
| 30 | 12 | 21 | \$10.00 |
| 32 | 14 | 23 1/2 | 10.60 |

Hoof Parers

Polished Jaws—Black Handles—
Lap Joint

| | | | |
|-----|----|----|---------|
| 212 | 12 | 23 | \$12.00 |
| 214 | 14 | 25 | 13.00 |

Tinners' Rivet Sets

| No. | For Iron Rivets, Lbs. | For Copper Rivets Nos. | Lgth. In. | Doz. Net |
|-----|--------------------------|------------------------------|--------------|-------------|
| 00 | 14 | | 5 1/2 | \$6.85 |
| 0 | 12 & 10 | 5 | 5 1/2 | 6.85 |
| 1 | 8 | 6 | 5 | 5.47 |
| 2 | 6 | 7 | 5 | 5.47 |
| 3 | 5 & 4 | 8 | 4 1/2 | 4.40 |
| 4 | 3 & 2 1/2 | 9 | 4 1/2 | 4.40 |
| 5 | 2 & 1 3/4 | 10 & 11 | 4 1/4 | 4.40 |
| 6 | 1 1/2 | 12 | 4 1/4 | 3.50 |
| 7 | 1 1/4 | 13 | 4 1/4 | 3.50 |
| 8 | 12 & 10 oz. | 14 | 4 1/4 | 3.50 |

Farmers' Rivet Sets

| | | | | |
|----|-----------|---------|---|--------|
| 7 | 6 | 7 | 5 | \$2.00 |
| 8 | 5 & 4 | 8 | 5 | 2.00 |
| 9 | 3 & 2 1/2 | 9 | 5 | 2.00 |
| 10 | 2 & 1 3/4 | 10 & 11 | 5 | 2.00 |

Bits

Countersink

| No. | Lgth. overall In. | Doz. Net |
|-----|----------------------|----------|
| 14 | 4 1/2 | \$3.35 |
| 15 | 4 1/2 | 3.35 |

Vaughan Hooks, Scrapers and Tongs

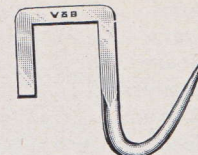
Bar Hooks

Solid Steel, Forged Points
Tinned Finish

NOTE—Hooks to fit 2-inch Bar will be furnished unless otherwise specified.

| No. | Steel | To fit Bar, in. | Length in. | Hook Projects, in. | Wgt., lbs., per doz. | Gross Net |
|-----|-----------------------------------|-----------------|----------------|--------------------|----------------------|-----------|
| 24 | $\frac{5}{16}$ | $\frac{1}{2}$ | 4 | $2\frac{1}{2}$ | $2\frac{1}{2}$ | \$10.00 |
| | | $1\frac{1}{2}$ | 4 | $2\frac{1}{2}$ | 3 | |
| | | $1\frac{3}{4}$ | 4 | $2\frac{1}{2}$ | $3\frac{1}{8}$ | |
| | | 2 | 4 | $2\frac{1}{2}$ | $3\frac{1}{4}$ | |
| 28 | $\frac{1}{2}$ | 2 | 5 | $3\frac{1}{4}$ | $9\frac{1}{2}$ | 21.00 |
| 22 | $\frac{7}{16}$ | $\frac{1}{2}$ | $4\frac{3}{4}$ | $2\frac{3}{4}$ | $5\frac{3}{4}$ | 16.00 |
| | | $1\frac{3}{4}$ | $4\frac{3}{4}$ | $2\frac{3}{4}$ | $6\frac{5}{8}$ | |
| | | 2 | $4\frac{3}{4}$ | $2\frac{3}{4}$ | $6\frac{3}{4}$ | |
| 26 | $\frac{3}{8}$ | $1\frac{3}{4}$ | 4 | $2\frac{1}{2}$ | $4\frac{3}{8}$ | 12.00 |
| | | 2 | 4 | $2\frac{1}{2}$ | $4\frac{3}{8}$ | |
| 30 | $1\frac{1}{2} \times \frac{1}{8}$ | $\frac{3}{8}$ | $2\frac{1}{4}$ | $1\frac{1}{2}$ | 1 | 9.00 |

Nos. 22, 24, 26 and 28 packed twelve in a box.
No. 30 packed 3 dozen in a box.



No. 24 Bar Meat Hook



No. 1 Box Hook



No. 12 Hay Hook

Hay or Box Hooks

| No. | Steel | Wood Handle in. | Overall in. | Under Handle in. | Wgt. Lbs. Per Doz. | Doz. Net |
|-----|----------------|-----------------|----------------|------------------|--------------------|----------|
| 1 | $\frac{1}{16}$ | $5\frac{1}{4}$ | $8\frac{1}{2}$ | 7 | $7\frac{3}{4}$ | \$2.65 |
| 12 | $\frac{1}{16}$ | | 12 | $8\frac{1}{2}$ | 12 | 2.65 |

No. 1, Wood Handle. No. 12, Loop Handle.

Box Scrapers

Triangular Blade of Extra Warranted Steel with Polished Finish Bevels. Heavy Steel Ferrule. Shank extends half way through handle and is secured by rivet passing through handle and shank. Blade is held in place by nut screwed on end of shank. Light oil shellac handle.

| No. | Width, cut. Edge, in. | Lgth. of Handle, in. | Lgth. over all, in. | Wgt. Lbs. Per Doz. | Doz. Net |
|----------|-----------------------|----------------------|---------------------|--------------------|----------|
| 6 | $2\frac{3}{4}$ | $7\frac{1}{2}$ | 12 | $8\frac{1}{2}$ | \$5.00 |
| 6 Blades | | | | | 3.20 |



No. 6 Box Scraper



No. 8 Block or Ship Scraper

Block or Ship Scrapers

Triangular Blade of Extra Warranted Steel with Polished Finish Bevels. Malleable Iron Ferrule. Blade is held in place by heavy machine bolt screwed into top of Ferrule. Walnut Stained Hickory Handle.

| No. | Width, cut. Edge, in. | Lgth. of Handle, in. | Lgth. over all, in. | Wgt. Lbs. Per Doz. | Doz. Net |
|----------|-----------------------|----------------------|---------------------|--------------------|----------|
| 8 | 5 | $13\frac{1}{2}$ | 17 | 19 | \$10.00 |
| 8 Blades | | | | | 4.00 |



No. 6 Hog Scraper

Hog Scrapers

Edges Ground Natural Finish Blades

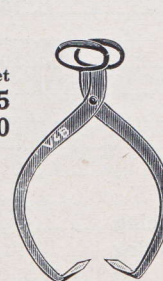
No. 6 Scraper is used by all the large packing houses. The Blade is secured by bolt through handle. Light stained handle.

No. 8 Scraper is designed for farmers' use.

| No. | Sheet Steel Gauge | Diam. of Blade, in. | Lgth. of Handle, in. | Lgth. over all, in. | Wgt., Lbs. per doz. | Doz. Net |
|-----------------|-------------------|---------------------|----------------------|---------------------|---------------------|----------|
| 6 Blued Blade | 18 | $4\frac{1}{2}$ | $5\frac{1}{2}$ | $6\frac{3}{4}$ | 7 | \$2.75 |
| 8 Natural Blade | 20 | 4 | $5\frac{1}{2}$ | $6\frac{1}{2}$ | $5\frac{1}{2}$ | 1.90 |

*Ice Tongs

| No. | Span In. | Wgt. Doz. | Doz. Net |
|-----|----------|-----------|----------|
| 1 | 15 | 45 | \$16.00 |
| 2 | 17 | 51 | 17.00 |
| 3 | 24 | 70 | 18.00 |
| 7 | 15 | 30 | 8.30 |



Nos. 1 to 3 Ice Tong



No. 7 Ice Tong

Swell Handles
Duck Bill Points
Painted Red

Bent Handle
Duck Bill Points
Painted Black—Red Tip

*Packed loose.

INDEX

| | A | Page | | | Page |
|--------------------------------|------------------|------|---|------------|------|
| Axes, Boys' | | 9 | Hatchets, Barreling | | 20 |
| Axes, Camp | | 9 | Hatchets, Box | | 19 |
| Axes, House | | 9 | Hatchets, Broad | | 18 |
| Axes, Hunters' | | 9 | Hatchets, Car Builders' | | 20 |
| Axes, Men's | 4, 5, 6, 7, 8, 9 | 9 | Hatchets, Claw | | 18 |
| Axes, Scout Pattern Camp | | 9 | Hatchets, Flooring | | 18 |
| | | | Hatchets, Haines Pattern | | 20 |
| | | | Hatchets, Half | 18, 20 | 20 |
| | | | Hatchets, Lathing | 18, 19, 20 | 20 |
| | | | Hatchets, Produce | | 20 |
| | | | Hatchets, Professional Carpenters' | | 17 |
| | | | Hatchets, Rig Builders' | | 20 |
| | | | Hatchets, Shingling | 18, 19, 20 | 20 |
| | | | Hatchets, Tradesman's | | 20 |
| | | | Hatchets, Underhill Pattern Lathing | | 19 |
| | | | Hooks, Bar | | 27 |
| | | | Hooks, Box | | 27 |
| | | | Hooks, Hay | | 27 |
| | | | | | |
| | | | | N | |
| | | | Nippers, Double Duty Cutting | | 26 |
| | | | Nippers, Nail Cutting | | 26 |
| | | | | | |
| | | | | P | |
| | | | Parers, Farriers' Hoof | | 26 |
| | | | Picks, Prospecting | | 16 |
| | | | Pincers, Blacksmiths' | | 26 |
| | | | Pincers, Carpenters' | | 26 |
| | | | Punches, Center | 21, 25 | 25 |
| | | | Punches, Drift | | 25 |
| | | | Punches, Lining Up | | 25 |
| | | | Punches, Machine | 21, 25 | 25 |
| | | | Punches, Pin | 21, 25 | 25 |
| | | | Punches, Prick | 21, 25 | 25 |
| | | | | | |
| | | | | S | |
| | | | Scrapers, Block | | 27 |
| | | | Scrapers, Box | | 27 |
| | | | Scrapers, Hog | | 27 |
| | | | Scrapers, Ship | | 27 |
| | | | Scutes, Bricklayers' | | 15 |
| | | | Sets, Bricklayers' | | 24 |
| | | | Sets, Rivet | | 26 |
| | | | Star Drills | | 24 |
| | | | | | |
| | | | | T | |
| | | | Tongs, Ice | | 27 |
| | | | | | |
| | | | | W | |
| | | | Wrecking Bars | | 24 |

